

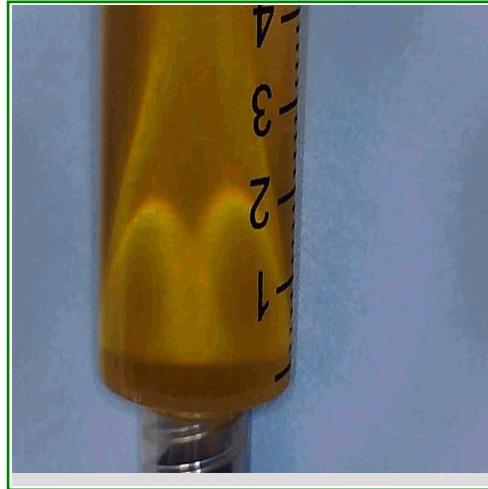
Catalina Hills / Venom
2046 W Ironwood Dr
Phoenix, AZ 85021
19289654611
Lic#: 00000016DCCC00020807

Sample: S308045-03
CC ID#: 2308C4L0044.2401
Lot#: N/A
Batch#: DISTR0810
Batch Size: N/A

FINAL

Sample Name: Strawberry Sunday Distillate-S
Strain Name: Strawberry Sunday
Matrix: Concentrates Extracts

Sample Received: 08/10/2023
Report Created: 08/16/2023



Potency Results

80.8%	<LOQ%	RATIO	
Total THC	Total CBD	1	0
		THC	CBD

Total THC= THCa * 0.877 + d9-THC
Total CBD= CBDa * 0.877 + CBD

SAFETY

Microbials	Residual Solvents	Mycotoxins	Pesticides	Metals
PASS	PASS	PASS	PASS	PASS

Catalina Hills / Venom

2046 W Ironwood Dr
Phoenix, AZ 85021
19289654611

Lic#: 00000016DCCC00020807

Sample: S308045-03

CC ID#: 2308C4L0044.2401

Lot#: N/A

Batch#: DISTR0810

Batch Size: N/A

FINAL

Sample Name: Strawberry Sunday Distillate-S

Strain Name: Strawberry Sunday

Matrix: Concentrates Extracts

Sample Received: 08/10/2023

Report Created: 08/16/2023

Cannabinoids by HPLC-DAD - Compliance

Date Analyzed: 08/14/2023 Analyst Initials: DRF

Analyte	LOQ	Mass	Mass	Q
	%	%	mg/g	
THCA	1.58	<LOQ	< LOQ	
d9-THC	1.58	80.8	808	
d8-THC	1.58	<LOQ	< LOQ	
CBDA	1.58	<LOQ	< LOQ	
CBD	1.58	<LOQ	< LOQ	M1
CBG	1.58	2.53	25.3	
CBN	1.58	<LOQ	< LOQ	
CBC	1.58	<LOQ	< LOQ	
Sum of Cannabinoids	1.58	83.3	833	Q3
Total THC	1.58	80.8	808	
Total CBD	1.58	<LOQ	< LOQ	

Total THC= THCa * 0.877 + d9-THC. Total CBD= CBDA * 0.877 + CBD.

LOQ = Limit of Quantitation; NR = Not Reported; ND = Not Detected.

Unless otherwise stated all quality control samples performed within specifications established by the Laboratory.

Cannabinoids method: HPLC-DAD.

Catalina Hills / Venom

2046 W Ironwood Dr
Phoenix, AZ 85021
19289654611

Lic#: 00000016DCCC00020807

Sample: S308045-03

CC ID#: 2308C4L0044.2401

Lot#: N/A

Batch#: DISTR0810

Batch Size: N/A

FINAL

Sample Name: Strawberry Sunday Distillate-S

Sample Received: 08/10/2023

Strain Name: Strawberry Sunday

Report Created: 08/16/2023

Matrix: Concentrates Extracts

Pesticides by LC/MS/MS - Compliance

Pass

Date Analyzed: 08/15/2023 Analyst Initials: JCB

Analyte	LOQ	Limit	Units	Q	Status	Analyte	LOQ	Limit	Units	Q	Status
	ppm	ppm	ppm				ppm	ppm	ppm		
Abamectin	0.119	0.5	<LOQ	V1	Pass	Hexythiazox	0.247	1.0	<LOQ	M2	Pass
Acephate	0.099	0.4	<LOQ		Pass	Imazalil	0.099	0.2	<LOQ	V1	Pass
Acequinocyl	0.494	2.0	<LOQ		Pass	Imidacloprid	0.099	0.4	<LOQ		Pass
Acetamiprid	0.049	0.2	<LOQ		Pass	Kresoxim-methyl	0.099	0.4	<LOQ		Pass
Aldicarb	0.099	0.4	<LOQ	V1	Pass	Malathion	0.049	0.2	<LOQ	V1	Pass
Azoxystrobin	0.049	0.2	<LOQ		Pass	Metalaxyl	0.099	0.2	<LOQ		Pass
Bifenazate	0.049	0.2	<LOQ	M1	Pass	Methiocarb	0.049	0.2	<LOQ	V1	Pass
Bifenthrin	0.049	0.2	<LOQ		Pass	Methomyl	0.099	0.4	<LOQ		Pass
Boscalid	0.099	0.4	<LOQ		Pass	Myclobutanil	0.049	0.2	<LOQ	V1	Pass
Carbaryl	0.049	0.2	<LOQ	V1	Pass	Naled	0.124	0.5	<LOQ	V1	Pass
Carbofuran	0.049	0.2	<LOQ		Pass	Oxamyl	0.247	1.0	<LOQ		Pass
Chlorantraniliprole	0.049	0.2	<LOQ	L1, V1	Pass	Paclobutrazol	0.099	0.4	<LOQ	V1	Pass
Chlorfenapyr	0.494	1.0	<LOQ		Pass	Permethrins	0.049	0.2	<LOQ	M1, V1	Pass
Chlorpyrifos	0.049	0.2	<LOQ		Pass	Phosmet	0.049	0.2	<LOQ	V1	Pass
Clofentezine	0.049	0.2	<LOQ		Pass	Piperonyl butoxide	0.494	2.0	<LOQ		Pass
Cyfluthrin	0.494	1.0	<LOQ	L1	Pass	Prallethrin	0.099	0.2	<LOQ	M1	Pass
Cypermethrin	0.247	1.0	<LOQ		Pass	Propiconazole	0.099	0.4	<LOQ	V1	Pass
Daminozide	0.494	1.0	<LOQ		Pass	Propoxur	0.049	0.2	<LOQ	M2	Pass
Diazinon	0.049	0.2	<LOQ		Pass	Pyrethrins	0.318	1.0	<LOQ	M1, V1	Pass
Dichlorvos	0.049	0.1	<LOQ		Pass	Pyridaben	0.049	0.2	<LOQ		Pass
Dimethoate	0.049	0.2	<LOQ		Pass	Spinosad	0.049	0.2	<LOQ		Pass
Ethoprophos	0.049	0.2	<LOQ		Pass	Spiromesifen	0.049	0.2	<LOQ		Pass
Etofenprox	0.099	0.4	<LOQ		Pass	Spirotetramat	0.049	0.2	<LOQ	M1, V1	Pass
Etoxazole	0.049	0.2	<LOQ		Pass	Spiroxamine	0.099	0.4	<LOQ		Pass
Fenoxycarb	0.049	0.2	<LOQ		Pass	Tebuconazole	0.099	0.4	<LOQ	L1, V1	Pass
Fenpyroximate	0.099	0.4	<LOQ	V1	Pass	Thiacloprid	0.049	0.2	<LOQ		Pass
Fipronil	0.099	0.4	<LOQ	L1, V1	Pass	Thiamethoxam	0.049	0.2	<LOQ		Pass
Flonicamid	0.247	1.0	<LOQ		Pass	Trifloxystrobin	0.049	0.2	<LOQ	M2	Pass
Fludioxonil	0.099	0.4	<LOQ	M2	Pass						

LOQ = Limit of Quantitation; NR = Not Reported; ND = Not Detected. Unless otherwise stated all quality control samples performed within specifications established by the Laboratory. Pesticides method: LC/MS/MS.

Catalina Hills / Venom

2046 W Ironwood Dr
Phoenix, AZ 85021
19289654611

Lic#: 00000016DCCC00020807

Sample: S308045-03

CC ID#: 2308C4L0044.2401

Lot#: N/A

Batch#: DISTR0810

Batch Size: N/A

FINAL

Sample Name: Strawberry Sunday Distillate-S

Strain Name: Strawberry Sunday

Matrix: Concentrates Extracts

Sample Received: 08/10/2023

Report Created: 08/16/2023

Metals by ICP-MS - Compliance

Pass

Date Analyzed: 08/15/2023 Analyst Initials: SML

Analyte	LOQ	Limit	Mass	Q	Status
	ppm	ppm	ppm		
Arsenic	0.101	0.405	<LOQ		Pass
Cadmium	0.101	0.405	<LOQ		Pass
Lead	0.402	1.05	<LOQ		Pass
Mercury	0.402	1.25	<LOQ		Pass

LOQ = Limit of Quantitation; ND = Not Detected. Unless otherwise stated all quality control samples performed within specifications established by the Laboratory.

Mycotoxins by ELISA- Compliance

Pass

Date Analyzed: 08/14/2023 Analyst Initials: MRB

Analyte	LOQ	Limit	Mass	Q	Status
	ppb	ppb	ppb		
Aflatoxins Total	2.00	20	<LOQ		Pass
Ochratoxin A	4.00	20	<LOQ		Pass

LOQ = Limit of Quantitation; NR = Not Reported; ND = Not Detected. Unless otherwise stated all quality control samples performed within specifications established by the Laboratory. Total Aflatoxins includes Aflatoxins B1, B2, G1, and G2.

Catalina Hills / Venom

2046 W Ironwood Dr
Phoenix, AZ 85021
19289654611
Lic#: 00000016DCCC00020807

Sample: S308045-03

CC ID#: 2308C4L0044.2401
Lot#: N/A
Batch#: DISTR0810
Batch Size: N/A

FINAL

Sample Name: Strawberry Sunday Distillate-S

Strain Name: Strawberry Sunday

Matrix: Concentrates Extracts

Sample Received: 08/10/2023

Report Created: 08/16/2023

Microbials

Pass

E. coli by 3M Petrifilm- Compliance

Plate

Date Analyzed: 08/15/2023 Analyst Initials: KAM

Analyte	LOQ	Limit	Result	Q	Status
	CFU/g	CFU/g	CFU/g		
E. coli	10	100	<10		Pass

Unless otherwise stated all quality control samples performed within specifications established by the Laboratory. Aspergillus includes species flavus, fumigatus, niger, and terreus. Salmonella and Aspergillus by Medicinal Genomics.

Aspergillus and Salmonella by qPCR - Compliance

qPCR

Date Analyzed: 08/15/2023 Analyst Initials: KAM

Analyte	Result	Q	Status
	in one gram		
Salmonella spp.	Not Detected		Pass
Aspergillus	Not Detected		Pass

Unless otherwise stated all quality control samples performed within specifications established by the Laboratory. Aspergillus includes species flavus, fumigatus, niger, and terreus. Salmonella and Aspergillus by Medicinal Genomics.

Catalina Hills / Venom

2046 W Ironwood Dr
Phoenix, AZ 85021
19289654611
Lic#: 00000016DCCC00020807

Sample: S308045-03

CC ID#: 2308C4L0044.2401
Lot#: N/A
Batch#: DISTR0810
Batch Size: N/A

FINAL

Sample Name: Strawberry Sunday Distillate-S

Strain Name: Strawberry Sunday

Matrix: Concentrates Extracts

Sample Received: 08/10/2023

Report Created: 08/16/2023

Residual Solvents by Headspace GC/MS - Compliance

Pass

Date Analyzed: 08/11/2023 Analyst Initials: SML

Analyte	LOQ	Limit	Units	Q	Status	Analyte	LOQ	Limit	Units	Q	Status
	ppm	ppm	ppm				ppm	ppm	ppm		
Acetone	121	1000	<LOQ		Pass	2-methylpentane/2,	77.3		<LOQ		
Acetonitrile	48.3	410	<LOQ		Pass	3-dimethylbutane					
Benzene	0.966	2	<LOQ		Pass	2-Propanol (IPA)	604	5000	<LOQ		Pass
Butanes	604	5000	<LOQ		Pass	Isopropyl acetate	604	5000	<LOQ		Pass
n-Butane	604		<LOQ			Methanol	362	3000	<LOQ		Pass
iso-Butane	604		<LOQ			Pentanes	604	5000	<LOQ		Pass
Chloroform	14.5	60	<LOQ		Pass	n-Pentane	604		<LOQ		
Dichloromethane	72.5	600	<LOQ		Pass	iso-pentane	604		<LOQ		
Ethanol	604	5000	<LOQ		Pass	neo-Pentane	604		<LOQ		
Ethyl acetate	604	5000	<LOQ		Pass	Propane	604	5000	<LOQ		Pass
Diethyl Ether	604	5000	<LOQ		Pass	Toluene	111	890	<LOQ		Pass
n-Heptane	604	5000	<LOQ		Pass	Xylenes	266	2170	<LOQ		Pass
Hexanes	38.6	290	<LOQ		Pass	m/p-Xylene	531		<LOQ		
n-Hexane	38.6		<LOQ			o-Xylene	266		<LOQ		
3-Methylpentane	38.6		<LOQ			Ethyl benzene	266		<LOQ		
2,2-Dimethylbutane	38.6		<LOQ								

LOQ = Limit of Quantitation; ND = Not Detected;
Unless otherwise stated all quality control samples performed
within specifications established by the Laboratory.
Solvents method: GC/MS



Jillian Blaney
Technical Laboratory Director

Catalina Hills / Venom

2046 W Ironwood Dr
Phoenix, AZ 85021
19289654611

Lic#: 00000016DCCC00020807

Sample: S308045-03

CC ID#: 2308C4L0044.2401

Lot#: N/A

Batch#: DISTR0810

Batch Size: N/A

FINAL

Sample Name: Strawberry Sunday Distillate-S

Strain Name: Strawberry Sunday

Matrix: Concentrates Extracts

Sample Received: 08/10/2023

Report Created: 08/16/2023

Notes and Definitions

Item	Definition
L1	The percent recovery of the LCS was above the control limit for the test but analyte was not detected above the Action Limit in Table 3.1.
M1	Matrix Spike recovery was higher than control limit but recovery of the LCS was within control limits.
M2	Matrix Spike recovery was lower than control limit but recovery of the LCS was within control limits.
Q3	Testing result is for informational purposes only and cannot be used to satisfy dispensary testing requirements in R9-17-317.01(A) or labeling requirements in R9-17-317. Testing result is not accredited under ISO 17025.
V1	CCV recovery exceeded control limits but the sample analyte concentration was below maximum allowable concentrations in table 3.1
ND	Analyte NOT DETECTED at or above the reporting limit.
RPD	Relative Percent Difference
%REC	Percent Recovery
Source	Sample that was matrix spiked or duplicated.