



Certificate of Analysis

AZDHS Certification # 0000005LCMI00301434



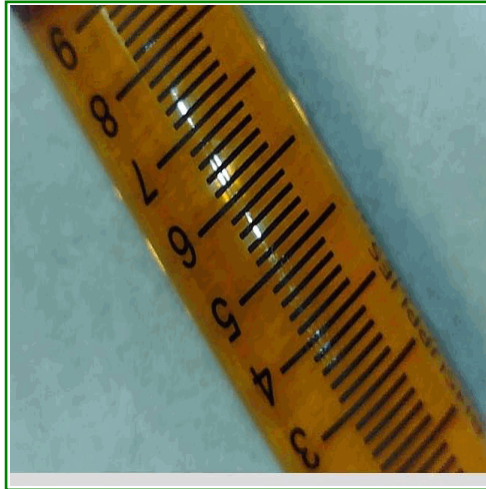
Catalina Hills / Venom
 2046 W Ironwood Dr
 Phoenix, AZ 85021
 19289654611
 Lic#: 00000016DCCC00020807

Sample: S303058-18
 CC ID#: 2303C4L0045.0979
 Lot#: N/A
 Batch#: CL317
 Batch Size: N/A

FINAL

Sample Name: Cherry Limeade Distillate-S
Strain Name: Cherry Limeade
Matrix: Concentrates Extracts

Sample Received: 03/20/2023
 Report Created: 03/24/2023



Potency Results

85.3%	<LOQ%	RATIO	
Total THC	Total CBD	1	: 0
		THC	CBD

Total THC= THCa * 0.877 + d9-THC
 Total CBD= CBDa * 0.877 + CBD

SAFETY

Microbials	Residual Solvents	Mycotoxins	Pesticides	Metals
PASS	PASS	PASS	PASS	PASS



C4 LABORATORIES

7650 E. Evans Rd, Unit A
 Scottsdale, AZ 85260
 (480) 219-6460
<http://www.c4lab.com>
 Lic.#0000005LCMI00301434

Jillian Blaney

Jillian Blaney
 Technical Laboratory Director

This product has been tested by C4 Laboratories LLC using valid testing methodologies and a quality system as required by Arizona state law. Results marked as 'Pass' or 'Fail' are done so in reference to R9-17: Arizona Administrative Code (A.A.C.) Title 9, Chapter 17, May 3, 2021. Values reported relate only to the product tested as received. C4 Laboratories LLC makes no claims as to the efficacy, safety or other risks associated with any detected or non-detected levels of any compounds reported herein. Contact C4 Laboratories LLC for a technical report related to this sample. This Certificate shall not be reproduced except in full, without the written approval of C4 Laboratories LLC. AZDHS certification 0000005LCMI00301434.



Certificate of Analysis

AZDHS Certification # 0000005LCMI00301434



PJLA
Accreditation No.: 96186
Certificate No.: L22-417

Catalina Hills / Venom

2046 W Ironwood Dr
Phoenix, AZ 85021
19289654611
Lic#: 00000016DCCC00020807

Sample: S303058-18

CC ID#: 2303C4L0045.0979
Lot#: N/A
Batch#: CL317
Batch Size: N/A

FINAL

Sample Name: Cherry Limeade Distillate-S

Strain Name: Cherry Limeade
Matrix: Concentrates Extracts

Sample Received: 03/20/2023
Report Created: 03/24/2023

Cannabinoids by HPLC - Medical

Date Analyzed: 03/22/2023 Analyst Initials: DRF

Analyte	LOQ	Mass	Mass	Q
	%	%	mg/g	
THCA	1.57	<LOQ	<LOQ	
d9-THC	1.57	85.3	853.00	
d8-THC	1.57	<LOQ	<LOQ	
CBDA	1.57	<LOQ	<LOQ	
CBD	1.57	<LOQ	<LOQ	M1
CBG	1.57	2.41	24.10	
CBN	1.57	1.64	16.40	
CBC	1.57	<LOQ	<LOQ	
Total Cannabinoids	1.57	89.3	893.00	Q3
Total THC	1.57	85.3	853.00	
Total CBD	1.57	<LOQ	<LOQ	

Total THC= THCa * 0.877 + d9-THC. Total CBD= CBDA * 0.877 + CBD.
LOQ = Limit of Quantitation; NR = Not Reported; ND = Not Detected.
Unless otherwise stated all quality control samples performed within specifications established by the Laboratory.
Cannabinoids method: HPLC-DAD.



C4 LABORATORIES

7650 E. Evans Rd, Unit A
Scottsdale, AZ 85260
(480) 219-6460
<http://www.c4lab.com>
Lic.#0000005LCMI00301434

Jillian Blaney
Technical Laboratory Director

This product has been tested by C4 Laboratories LLC using valid testing methodologies and a quality system as required by Arizona state law. Results marked as 'Pass' or 'Fail' are done so in reference to R9-17: Arizona Administrative Code (A.A.C.) Title 9, Chapter 17, May 3, 2021. Values reported relate only to the product tested as received. C4 Laboratories LLC makes no claims as to the efficacy, safety or other risks associated with any detected or non-detected levels of any compounds reported herein. Contact C4 Laboratories LLC for a technical report related to this sample. This Certificate shall not be reproduced except in full, without the written approval of C4 Laboratories LLC. AZDHS certification 0000005LCMI00301434.



Certificate of Analysis

AZDHS Certification # 0000005LCMI00301434



Catalina Hills / Venom
 2046 W Ironwood Dr
 Phoenix, AZ 85021
 19289654611
 Lic#: 0000016DCCC00020807

Sample: S303058-18
 CC ID#: 2303C4L0045.0979
 Lot#: N/A
 Batch#: CL317
 Batch Size: N/A

FINAL

Sample Name: Cherry Limeade Distillate-S
Strain Name: Cherry Limeade
Matrix: Concentrates Extracts

Sample Received: 03/20/2023
 Report Created: 03/24/2023

Pesticides by LCMSMS - Medical

Pass

Date Analyzed: 03/23/2023 Analyst Initials: CAC

Analyte	LOQ	Limit	Units	Q	Status	Analyte	LOQ	Limit	Units	Q	Status
	ppm	ppm	ppm				ppm	ppm	ppm		
Abamectin	0.122	0.5	<LOQ		Pass	Hexythiazox	0.254	1.0	<LOQ	M2	Pass
Acephate	0.102	0.4	<LOQ	L1, M1	Pass	Imazalil	0.102	0.2	<LOQ		Pass
Acequinocyl	0.508	2.0	<LOQ	M2	Pass	Imidacloprid	0.102	0.4	<LOQ		Pass
Acetamiprid	0.051	0.2	<LOQ		Pass	Kresoxim-methyl	0.102	0.4	<LOQ		Pass
Aldicarb	0.102	0.4	<LOQ		Pass	Malathion	0.051	0.2	<LOQ		Pass
Azoxystrobin	0.051	0.2	<LOQ		Pass	Metalaxyl	0.102	0.2	<LOQ		Pass
Bifenazate	0.051	0.2	<LOQ		Pass	Methiocarb	0.051	0.2	<LOQ		Pass
Bifenthrin	0.051	0.2	<LOQ	M2	Pass	Methomyl	0.102	0.4	<LOQ		Pass
Boscalid	0.102	0.4	<LOQ	M2	Pass	Myclobutanil	0.051	0.2	<LOQ		Pass
Carbaryl	0.051	0.2	<LOQ		Pass	Naled	0.127	0.5	<LOQ		Pass
Carbofuran	0.051	0.2	<LOQ		Pass	Oxamyl	0.254	1.0	<LOQ		Pass
Chlorantraniliprole	0.051	0.2	<LOQ		Pass	Pacllobutrazol	0.102	0.4	<LOQ		Pass
Chlorfenapyr	0.508	1.0	<LOQ	M2	Pass	Permethrins	0.051	0.2	<LOQ		Pass
Chlorpyrifos	0.051	0.2	<LOQ	M2	Pass	Phosmet	0.051	0.2	<LOQ		Pass
Clofentezine	0.051	0.2	<LOQ	M2	Pass	Piperonyl butoxide	0.508	2.0	<LOQ		Pass
Cyfluthrin	0.508	1.0	<LOQ	M2	Pass	Prallethrin	0.102	0.2	<LOQ		Pass
Cypermethrin	0.254	1.0	<LOQ	M2	Pass	Propiconazole	0.102	0.4	<LOQ	M2	Pass
Daminozide	0.508	1.0	<LOQ		Pass	Propoxur	0.051	0.2	<LOQ		Pass
Diazinon	0.051	0.2	<LOQ		Pass	Pyrethrins	0.327	1.0	<LOQ		Pass
Dichlorvos	0.051	0.1	<LOQ		Pass	Pyridaben	0.051	0.2	<LOQ		Pass
Dimethoate	0.051	0.2	<LOQ		Pass	Spinosad	0.051	0.2	<LOQ		Pass
Ethoprophos	0.051	0.2	<LOQ		Pass	Spiromesifen	0.051	0.2	<LOQ		Pass
Etofenprox	0.102	0.4	<LOQ		Pass	Spirotetramat	0.051	0.2	<LOQ		Pass
Etoxazole	0.051	0.2	<LOQ		Pass	Spiroxamine	0.102	0.4	<LOQ		Pass
Fenoxycarb	0.051	0.2	<LOQ	M2	Pass	Tebuconazole	0.102	0.4	<LOQ	M2	Pass
Fenpyroximate	0.102	0.4	<LOQ	M2	Pass	Thiacloprid	0.051	0.2	<LOQ		Pass
Fipronil	0.102	0.4	<LOQ		Pass	Thiamethoxam	0.051	0.2	<LOQ		Pass
Flonicamid	0.254	1.0	<LOQ		Pass	Trifloxystrobin	0.051	0.2	<LOQ	M2	Pass
Fludioxonil	0.102	0.4	<LOQ		Pass						

LOQ = Limit of Quantitation; NR = Not Reported; ND = Not Detected. Unless otherwise stated all quality control samples performed within specifications established by the Laboratory. Pesticides method: LC/MS/MS.



C4 LABORATORIES

7650 E. Evans Rd, Unit A
 Scottsdale, AZ 85260
 (480) 219-6460
 http://www.c4lab.com
 Lic.#0000005LCMI00301434

Jillian Blaney
 Technical Laboratory Director

This product has been tested by C4 Laboratories LLC using valid testing methodologies and a quality system as required by Arizona state law. Results marked as 'Pass' or 'Fail' are done so in reference to R9-17: Arizona Administrative Code (A.A.C.) Title 9, Chapter 17, May 3, 2021. Values reported relate only to the product tested as received. C4 Laboratories LLC makes no claims as to the efficacy, safety or other risks associated with any detected or non-detected levels of any compounds reported herein. Contact C4 Laboratories LLC for a technical report related to this sample. This Certificate shall not be reproduced except in full, without the written approval of C4 Laboratories LLC. AZDHS certification 0000005LCMI00301434.



Certificate of Analysis

AZDHS Certification # 0000005LCMI00301434



Catalina Hills / Venom

2046 W Ironwood Dr
Phoenix, AZ 85021
19289654611
Lic#: 00000016DCCC00020807

Sample: S303058-18

CC ID#: 2303C4L0045.0979
Lot#: N/A
Batch#: CL317
Batch Size: N/A

FINAL

Sample Name: Cherry Limeade Distillate-S

Strain Name: Cherry Limeade
Matrix: Concentrates Extracts

Sample Received: 03/20/2023
Report Created: 03/24/2023

Metals by ICPMS - Medical

Pass

Date Analyzed: 03/23/2023 Analyst Initials: LSS

Analyte	LOQ	Limit	Mass	Q	Status
	ppm	ppm	ppm		
Arsenic	0.099	0.405	<LOQ		Pass
Cadmium	0.099	0.405	<LOQ		Pass
Lead	0.395	1.05	<LOQ		Pass
Mercury	0.395	1.25	<LOQ		Pass

LOQ = Limit of Quantitation; ND = Not Detected. Unless otherwise stated all quality control samples performed within specifications established by the Laboratory.

Mycotoxins by ELISA- Medical

Pass

Date Analyzed: 03/21/2023 Analyst Initials: KAM

Analyte	LOQ	Limit	Mass	Q	Status
	ppb	ppb	ppb		
Aflatoxins Total	2.00	20	<LOQ		Pass
Ochratoxin A	4.00	20	<LOQ		Pass

LOQ = Limit of Quantitation; NR = Not Reported; ND = Not Detected. Unless otherwise stated all quality control samples performed within specifications established by the Laboratory. Total Aflatoxins includes Aflatoxins B1, B2, G1, and G2.



C4 LABORATORIES

7650 E. Evans Rd, Unit A
Scottsdale, AZ 85260
(480) 219-6460
<http://www.c4lab.com>
Lic.#0000005LCMI00301434

Jillian Blaney
Technical Laboratory Director

This product has been tested by C4 Laboratories LLC using valid testing methodologies and a quality system as required by Arizona state law. Results marked as 'Pass' or 'Fail' are done so in reference to R9-17: Arizona Administrative Code (A.A.C.) Title 9, Chapter 17, May 3, 2021. Values reported relate only to the product tested as received. C4 Laboratories LLC makes no claims as to the efficacy, safety or other risks associated with any detected or non-detected levels of any compounds reported herein. Contact C4 Laboratories LLC for a technical report related to this sample. This Certificate shall not be reproduced except in full, without the written approval of C4 Laboratories LLC. AZDHS certification 0000005LCMI00301434.



Certificate of Analysis

AZDHS Certification # 00000005LCMI00301434



Catalina Hills / Venom

2046 W Ironwood Dr
Phoenix, AZ 85021
19289654611
Lic#: 00000016DCCC00020807

Sample: S303058-18

CC ID#: 2303C4L0045.0979
Lot#: N/A
Batch#: CL317
Batch Size: N/A

FINAL

Sample Name: Cherry Limeade Distillate-S

Strain Name: Cherry Limeade

Matrix: Concentrates Extracts

Sample Received: 03/20/2023

Report Created: 03/24/2023

Microbials

Pass

E. coli by 3M Petrifilm- Medical

Plate

Date Analyzed: 03/22/2023 Analyst Initials: MRB

Analyte	LOQ	Limit	Mass	Q	Status
	cfu/g	cfu/g	cfu/g		
E. coli	9.4	100	<LOQ		Pass

Notes: Aerobic plate counts and yeast and mold are provided for informational purposes only.
LOQ = Limit of Quantitation; TNTC = Too Numerous to Count; NR = Not Reported; NT = Not Tested;
ND = Not Detected; Unless otherwise stated all quality control samples performed within specifications established by the Laboratory. Aspergillus includes species flavus, fumigatus, niger, and terreus.
E. coli by Petrifilm, Salmonella and Aspergillus by Medicinal Genomics.

Aspergillus and Salmonella by qPCR - Medical qPCR

Date Analyzed: 03/22/2023 Analyst Initials: MRB

Analyte	Mass	Q	Status
Salmonella spp.	Not Detected		Pass
Aspergillus	Not Detected		Pass

Notes: Aerobic plate counts and yeast and mold are provided for informational purposes only.
LOQ = Limit of Quantitation; TNTC = Too Numerous to Count; NR = Not Reported; NT = Not Tested;
ND = Not Detected; Unless otherwise stated all quality control samples performed within specifications established by the Laboratory. Aspergillus includes species flavus, fumigatus, niger, and terreus.
E. coli by Petrifilm, Salmonella and Aspergillus by Medicinal Genomics.



C4 LABORATORIES

7650 E. Evans Rd, Unit A
Scottsdale, AZ 85260
(480) 219-6460
<http://www.c4lab.com>
Lic.# 00000005LCMI00301434

Jillian Blaney
Technical Laboratory Director

This product has been tested by C4 Laboratories LLC using valid testing methodologies and a quality system as required by Arizona state law. Results marked as 'Pass' or 'Fail' are done so in reference to R9-17: Arizona Administrative Code (A.A.C.) Title 9, Chapter 17, May 3, 2021. Values reported relate only to the product tested as received. C4 Laboratories LLC makes no claims as to the efficacy, safety or other risks associated with any detected or non-detected levels of any compounds reported herein. Contact C4 Laboratories LLC for a technical report related to this sample. This Certificate shall not be reproduced except in full, without the written approval of C4 Laboratories LLC. AZDHS certification 00000005LCMI00301434.



Certificate of Analysis

AZDHS Certification # 0000005LCMI00301434

**Catalina Hills / Venom**

2046 W Ironwood Dr
Phoenix, AZ 85021
19289654611
Lic#: 00000016DCCC00020807

Sample: S303058-18

CC ID#: 2303C4L0045.0979
Lot#: N/A
Batch#: CL317
Batch Size: N/A

FINAL**Sample Name: Cherry Limeade Distillate-S****Strain Name: Cherry Limeade****Matrix: Concentrates Extracts**

Sample Received: 03/20/2023

Report Created: 03/24/2023

Residual Solvents by Headspace GCMS - Medical**Pass**

Date Analyzed: 03/24/2023 Analyst Initials: SML

Analyte	LOQ	Limit	Units	Q	Status	Analyte	LOQ	Limit	Units	Q	Status
	ppm	ppm	ppm				ppm	ppm	ppm		
Acetone	115	1000	<LOQ		Pass	2-methylpentane/2,	73.7		<LOQ		
Acetonitrile	46.1	410	<LOQ		Pass	3-dimethylbutane					
Benzene	0.922	2	<LOQ		Pass	2-Propanol (IPA)	576	5000	<LOQ		Pass
Butanes	576	5000	<LOQ		Pass	Isopropyl acetate	576	5000	<LOQ		Pass
n-Butane	576		<LOQ			Methanol	346	3000	<LOQ		Pass
iso-Butane	576		<LOQ	L1		Pentanes	576	5000	<LOQ		Pass
Chloroform	13.8	60	<LOQ		Pass	n-Pentane	576		<LOQ		
Dichloromethane	69.1	600	<LOQ		Pass	iso-pentane	576		<LOQ		
Ethanol	576	5000	<LOQ		Pass	neo-Pentane	576		<LOQ		
Ethyl acetate	576	5000	<LOQ		Pass	Propane	576	5000	<LOQ		Pass
Diethyl Ether	576	5000	<LOQ		Pass	Toluene	106	890	<LOQ		Pass
n-Heptane	576	5000	<LOQ		Pass	Xylenes	253	2170	<LOQ		Pass
Hexanes	36.9	290	<LOQ		Pass	m/p-Xylene	507		<LOQ		
n-Hexane	36.9		<LOQ			o-Xylene	253		<LOQ		
3-Methylpentane	36.9		<LOQ			Ethyl benzene	253		<LOQ		
2,2-Dimethylbutane	36.9		<LOQ								

LOQ = Limit of Quantitation; ND = Not Detected;
Unless otherwise stated all quality control samples performed
within specifications established by the Laboratory.
Solvents method: GC/MS

**C4 LABORATORIES**

7650 E. Evans Rd, Unit A
Scottsdale, AZ 85260
(480) 219-6460
<http://www.c4lab.com>
Lic.#0000005LCMI00301434

Jillian Blaney

Jillian Blaney
Technical Laboratory Director

This product has been tested by C4 Laboratories LLC using valid testing methodologies and a quality system as required by Arizona state law. Results marked as 'Pass' or 'Fail' are done so in reference to R9-17: Arizona Administrative Code (A.A.C.) Title 9, Chapter 17, May 3, 2021. Values reported relate only to the product tested as received. C4 Laboratories LLC makes no claims as to the efficacy, safety or other risks associated with any detected or non-detected levels of any compounds reported herein. Contact C4 Laboratories LLC for a technical report related to this sample. This Certificate shall not be reproduced except in full, without the written approval of C4 Laboratories LLC. AZDHS certification 0000005LCMI00301434.



Certificate of Analysis

AZDHS Certification # 00000005LCMI00301434



Catalina Hills / Venom
 2046 W Ironwood Dr
 Phoenix, AZ 85021
 19289654611
 Lic#: 00000016DCCC00020807

Sample: S303058-18
 CC ID#: 2303C4L0045.0979
 Lot#: N/A
 Batch#: CL317
 Batch Size: N/A

FINAL

Sample Name: Cherry Limeade Distillate-S
 Strain Name: Cherry Limeade
 Matrix: Concentrates Extracts

Sample Received: 03/20/2023
 Report Created: 03/24/2023

Notes and Definitions

Item	Definition
I1	Interference. Relative intensity of a characteristic ion in the sample analyte exceeded 30% of the relative intensity in the reference spectrum.
L1	The percent recovery of the LCS was above the control limit for the test but analyte was not detected above the Action Limit in Table 3.1.
M1	Matrix Spike recovery was higher than control limit but recovery of the LCS was within control limits.
M2	Matrix Spike recovery was lower than control limit but recovery of the LCS was within control limits.
Q3	Testing result is for informational purposes only and cannot be used to satisfy dispensary testing requirements in R9-17-317.01(A) or labeling requirements in R9-17-317. Testing result is not accredited under ISO 17025.
V1	CCV recovery exceeded control limits but the sample analyte concentration was below maximum allowable concentrations in table 3.1
ND	Analyte NOT DETECTED at or above the reporting limit.
RPD	Relative Percent Difference
%REC	Percent Recovery
Source	Sample that was matrix spiked or duplicated.



C4 LABORATORIES

7650 E. Evans Rd, Unit A
 Scottsdale, AZ 85260
 (480) 219-6460
<http://www.c4lab.com>
 Lic.#00000005LCMI00301434

Jillian Blaney
 Technical Laboratory Director

This product has been tested by C4 Laboratories LLC using valid testing methodologies and a quality system as required by Arizona state law. Results marked as 'Pass' or 'Fail' are done so in reference to R9-17: Arizona Administrative Code (A.A.C.) Title 9, Chapter 17, May 3, 2021. Values reported relate only to the product tested as received. C4 Laboratories LLC makes no claims as to the efficacy, safety or other risks associated with any detected or non-detected levels of any compounds reported herein. Contact C4 Laboratories LLC for a technical report related to this sample. This Certificate shall not be reproduced except in full, without the written approval of C4 Laboratories LLC. AZDHS certification 00000005LCMI00301434.