

100mg 10pk gummies- Peach (sour)

Sample ID: 2307APO1792.8586

Strain: Peach

Matrix: Ingestible

Type: Soft Chew

Produced:

Collected: 07/20/2023 11:52 am

Received: 07/20/2023

Completed: 07/24/2023

Batch #: 2229226981209254-SP7.19.23

Client

Smokiez Edibles

Lic. # 000000015DCGC00626237

Lot #: 2229226981209254



Summary

Test	Date Tested	Result
Batch		
Cannabinoids	07/21/2023	Pass Complete
Microbials	07/24/2023	Pass

Cannabinoids

Complete

10.4484 mg/serving 104.4838 mg/container Total THC	ND ND Total CBD	10.4484 mg/serving 104.4838 mg/container Total Cannabinoids ^(Q3)	NT Total Terpenes ^(Q3)
--	-------------------------------------	---	---

Analyte	LOD mg/container	LOQ mg/container	Result mg/container	Result mg/g	Q
THCa		3.5940	ND	ND	
Δ9-THC		3.5940	104.4838	1.7443	
Δ8-THC		3.5940	ND	ND	
THCV		3.5940	ND	ND	
CBDa		3.5940	ND	ND	
CBD		3.5940	ND	ND	
CBDVa		3.5940	ND	ND	
CBDV		3.5940	ND	ND	
CBN		3.5940	<LOQ	<LOQ	
CBGa		3.5940	ND	ND	
CBG		3.5940	<LOQ	<LOQ	
CBC		3.5940	<LOQ	<LOQ	
Total THC			104.4838	1.7443	
Total CBD			ND	ND	
Total			104.4838	1.7443	

Date Tested: 07/21/2023 07:00 am
10 servings per container.



Bryant Kearl
Lab Director
07/24/2023

Confident Cannabis
All Rights Reserved
support@confidentcannabis.com
(866) 506-5866
www.confidentcannabis.com



100mg 10pk gummies- Peach (sour)

Sample ID: 2307APO1792.8586

Strain: Peach

Matrix: Ingestible

Type: Soft Chew

Produced:

Collected: 07/20/2023 11:52 am

Received: 07/20/2023

Completed: 07/24/2023

Batch #: 2229226981209254-SP7.19.23

Client

Smokiez Edibles

Lic. # 000000015DCGC00626237

Lot #: 2229226981209254

Microbials

Pass

Analyte	Limit	Result	Status	Q
Salmonella SPP	Detected/Not Detected in 1g	ND	Pass	

Analyte	LOQ	Limit	Result	Status	Q
E. Coli	CFU/g 10.0	CFU/g 100.0	CFU/g < 10 CFU/g	Pass	

Date Tested: 07/24/2023 12:00 am

Mycotoxins

Not Tested

Analyte	LOD	LOQ	Limit	Units	Status	Q
---------	-----	-----	-------	-------	--------	---

Date Tested:

Heavy Metals

Not Tested

Analyte	LOD	LOQ	Limit	Units	Status	Q
---------	-----	-----	-------	-------	--------	---

Date Tested:



Bryant Kearl
Lab Director
07/24/2023

Confident Cannabis
All Rights Reserved
support@confidentcannabis.com
(866) 506-5866
www.confidentcannabis.com



100mg 10pk gummies- Peach (sour)

Sample ID: 2307APO1792.8586

Strain: Peach

Matrix: Ingestible

Type: Soft Chew

Produced:

Collected: 07/20/2023 11:52 am

Received: 07/20/2023

Completed: 07/24/2023

Batch #: 2229226981209254-SP7.19.23

Client

Smokiez Edibles

Lic. # 000000015DCGC00626237

Lot #: 2229226981209254

Qualifiers Definitions

Qualifier Notation	Qualifier Description
I1	The relative intensity of a characteristic ion in a sample analyte exceeded the acceptance criteria in subsection (L)(1) with respect to the reference spectra, indicating interference
L1	When testing for pesticides, fungicides, herbicides, growth regulators, heavy metals, or residual solvents, the percent recovery of a laboratory control sample is greater than the acceptance limits in subsection (K)(2)(c), but the sample's target analytes were not detected above the maximum allowable concentrations in Table 3.1 for the analytes in the sample
M1	The recovery from the matrix spike in subsection (K)(4) was: a. High, but the recovery from the laboratory control sample in subsection (K)(2) was within acceptance criteria
M2	The recovery from the matrix spike in subsection (K)(4) was: b. Low, but the recovery from the laboratory control sample in subsection (K)(2) was within acceptance criteria
M3	The recovery from the matrix spike in subsection (K)(4) was: c. Unusable because the analyte concentration was disproportionate to the spike level, but the recovery from the laboratory control sample in subsection (K)(2) was within acceptance criteria
R1	The relative percent difference for the laboratory control sample and duplicate exceeded the limit in subsection (K)(3), but the recovery in subsection (K)(2) was within acceptance criteria
V1	The recovery from continuing calibration verification standards exceeded the acceptance limits in subsection (J)(1)(b), but the sample's target analytes were not detected above the maximum allowable concentrations in Table 3.1 for the analytes in the sample
Q2	The sample is heterogeneous, and sample homogeneity could not be readily achieved using routine laboratory practices - Used to denote that the sample as-received could not be fully pre-homogenized in packaging prior to microbiology analysis
Q3	Testing result is for informational purposes only and cannot be used to satisfy dispensary testing requirements in R9-17-317.01(A) or labeling requirements in R9-17-317



Bryant Kearl
Lab Director
07/24/2023

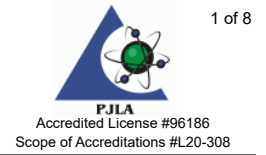
Confident Cannabis
All Rights Reserved
support@confidentcannabis.com
(866) 506-5866
www.confidentcannabis.com





Certificate of Analysis

AZDHS Certification # 05LCMI00301434



Sugars

3905 Old State Highway 279
Camp Verde, AZ 86322
15302624886
Lic#: 00000111ESTX14447382

Sample: S211004-01

CC ID#: 2211C4L0004.4929
Lot#: N/A
Batch#: 2229226981209254
Batch Size: N/A

AMENDED

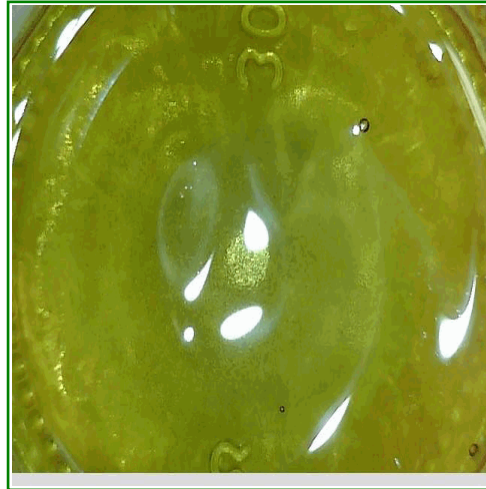
Sample Name: Sugars AZ 001

Sample Received: 11/02/2022

Strain Name: Sugar AZ 001 #3

Report Created: 11/11/2022

Matrix: Concentrates Extracts



Potency Results

90.4%	<LOQ%	RATIO	
Total THC	Total CBD	1	0
		THC	CBD

Total THC= THCa * 0.877 + d9-THC
Total CBD= CBDa * 0.877 + CBD

SAFETY

Microbials	Residual Solvents	Mycotoxins	Pesticides	Metals
PASS	PASS	PASS	PASS	PASS



C4 LABORATORIES

7650 E. Evans Rd, Unit A
Scottsdale, AZ 85260
(480) 219-6460
<http://www.c4lab.com>
Lic.#00000005LCMI00301434

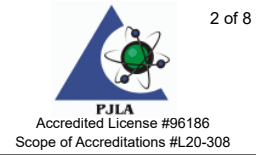
Jillian Blaney
Technical Laboratory Director

This product has been tested by C4 Laboratories LLC using valid testing methodologies and a quality system as required by Arizona state law. Results marked as 'Pass' or 'Fail' are done so in reference to R9-17: Arizona Administrative Code (A.A.C.) Title 9, Chapter 17, May 3, 2021. Values reported relate only to the product tested as received. C4 Laboratories LLC makes no claims as to the efficacy, safety or other risks associated with any detected or non-detected levels of any compounds reported herein. Contact C4 Laboratories LLC for a technical report related to this sample. This Certificate shall not be reproduced except in full, without the written approval of C4 Laboratories LLC. AZDHS certification 00000005LCMI00301434.



Certificate of Analysis

AZDHS Certification # 05LCMI00301434



Sugars

3905 Old State Highway 279
Camp Verde, AZ 86322
15302624886
Lic#: 00000111ESTX14447382

Sample: S211004-01

CC ID#: 2211C4L0004.4929
Lot#: N/A
Batch#: 2229226981209254
Batch Size: N/A

AMENDED

Sample Name: Sugars AZ 001

Strain Name: Sugar AZ 001 #3

Matrix: Concentrates Extracts

Sample Received: 11/02/2022

Report Created: 11/11/2022

Cannabinoids by HPLC - Medical

Date Analyzed: 11/03/2022 Analyst Initials: NJR

Analyte	LOQ	Mass	Mass	Q
	%	%	mg/g	
THCA	1.49	<LOQ	<LOQ	
d9-THC	1.49	90.4	904.00	
CBDa	1.49	<LOQ	<LOQ	
CBD	1.49	<LOQ	<LOQ	M1
Total Cannabinoids	1.49	90.4	904.00	
Total THC	1.49	90.4	904.00	
Total CBD	1.49	<LOQ	<LOQ	

Total THC= THCa * 0.877 + d9-THC. Total CBD= CBDa * 0.877 + CBD.

LOQ = Limit of Quantitation; NR = Not Reported; ND = Not Detected.

Unless otherwise stated all quality control samples performed within specifications established by the Laboratory.

Cannabinoids method: HPLC-DAD.



C4 LABORATORIES

7650 E. Evans Rd, Unit A
Scottsdale, AZ 85260
(480) 219-6460
<http://www.c4lab.com>
Lic.#00000005LCMI00301434

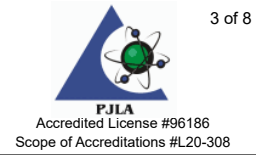
Jillian Blaney
Technical Laboratory Director

This product has been tested by C4 Laboratories LLC using valid testing methodologies and a quality system as required by Arizona state law. Results marked as 'Pass' or 'Fail' are done so in reference to R9-17: Arizona Administrative Code (A.A.C.) Title 9, Chapter 17, May 3, 2021. Values reported relate only to the product tested as received. C4 Laboratories LLC makes no claims as to the efficacy, safety or other risks associated with any detected or non-detected levels of any compounds reported herein. Contact C4 Laboratories LLC for a technical report related to this sample. This Certificate shall not be reproduced except in full, without the written approval of C4 Laboratories LLC. AZDHS certification 00000005LCMI00301434.



Certificate of Analysis

AZDHS Certification # 05LCMI00301434



Sugars

3905 Old State Highway 279
Camp Verde, AZ 86322
15302624886
Lic#: 00000111ESTX14447382

Sample: S211004-01

CC ID#: 2211C4L0004.4929
Lot#: N/A
Batch#: 2229226981209254
Batch Size: N/A

AMENDED

Sample Name: Sugars AZ 001

Sample Received: 11/02/2022

Strain Name: Sugar AZ 001 #3

Report Created: 11/11/2022

Matrix: Concentrates Extracts

Pesticides by LCMSMS - Medical

Pass

Date Analyzed: 11/02/2022 Analyst Initials: EXP

Analyte	LOQ	Limit	Units	Q	Status	Analyte	LOQ	Limit	Units	Q	Status
	ppm	ppm	ppm				ppm	ppm	ppm		
Abamectin	0.118	0.5	<LOQ		Pass	Hexythiazox	0.251	1.0	<LOQ	M2	Pass
Acephate	0.100	0.4	<LOQ		Pass	Imazalil	0.100	0.2	<LOQ		Pass
Acequinocyl	0.502	2.0	<LOQ	M2	Pass	Imidacloprid	0.100	0.4	<LOQ		Pass
Acetamiprid	0.050	0.2	<LOQ		Pass	Kresoxim-methyl	0.100	0.4	<LOQ		Pass
Aldicarb	0.100	0.4	<LOQ		Pass	Malathion	0.050	0.2	<LOQ		Pass
Azoxystrobin	0.050	0.2	<LOQ		Pass	Metaxyl	0.100	0.2	<LOQ		Pass
Bifenazate	0.050	0.2	<LOQ		Pass	Methiocarb	0.050	0.2	<LOQ		Pass
Bifenthrin	0.050	0.2	<LOQ	M2	Pass	Methomyl	0.100	0.4	<LOQ		Pass
Boscalid	0.100	0.4	<LOQ	M2	Pass	Myclobutanil	0.050	0.2	<LOQ		Pass
Carbaryl	0.050	0.2	<LOQ		Pass	Naled	0.125	0.5	<LOQ		Pass
Carbofuran	0.050	0.2	<LOQ		Pass	Oxamyl	0.251	1.0	<LOQ		Pass
Chlorantraniliprole	0.050	0.2	<LOQ		Pass	Paclobutrazol	0.100	0.4	<LOQ		Pass
Chlorfenapyr	0.502	1.0	<LOQ	M2	Pass	Permethrins	0.050	0.2	<LOQ	M2	Pass
Chlorpyrifos	0.050	0.2	<LOQ	M2	Pass	Phosmet	0.050	0.2	<LOQ		Pass
Clofentezine	0.050	0.2	<LOQ	M2	Pass	Piperonyl butoxide	0.502	2.0	<LOQ		Pass
Cyfluthrin	0.502	1.0	<LOQ	M2	Pass	Prallethrin	0.100	0.2	<LOQ		Pass
Cypermethrin	0.251	1.0	<LOQ	M2	Pass	Propiconazole	0.100	0.4	<LOQ		Pass
Daminozide	0.502	1.0	<LOQ		Pass	Propoxur	0.050	0.2	<LOQ		Pass
Diazinon	0.050	0.2	<LOQ	M2	Pass	Pyrethrins	0.315	1.0	<LOQ		Pass
Dichlorvos	0.050	0.1	<LOQ		Pass	Pyridaben	0.050	0.2	<LOQ		Pass
Dimethoate	0.050	0.2	<LOQ		Pass	Spinosad	0.050	0.2	<LOQ	M2	Pass
Ethoprophos	0.050	0.2	<LOQ		Pass	Spiromesifen	0.050	0.2	<LOQ		Pass
Etofenprox	0.100	0.4	<LOQ	M2	Pass	Spirotetramat	0.050	0.2	<LOQ	M1	Pass
Etoxazole	0.050	0.2	<LOQ		Pass	Spiroxamine	0.100	0.4	<LOQ		Pass
Fenoxycarb	0.050	0.2	<LOQ	M2	Pass	Tebuconazole	0.100	0.4	<LOQ		Pass
Fenpyroximate	0.100	0.4	<LOQ		Pass	Thiacloprid	0.050	0.2	<LOQ		Pass
Fipronil	0.100	0.4	<LOQ	L1, M1, V1	Pass	Thiamethoxam	0.050	0.2	<LOQ		Pass
Flonicamid	0.251	1.0	<LOQ		Pass	Trifloxystrobin	0.050	0.2	<LOQ	M2	Pass
Fludioxonil	0.100	0.4	<LOQ	M2	Pass						

LOQ = Limit of Quantitation; NR = Not Reported; ND = Not Detected. Unless otherwise stated all quality control samples performed within specifications established by the Laboratory. Pesticides method: LC/MS/MS.



C4 LABORATORIES

7650 E. Evans Rd, Unit A
Scottsdale, AZ 85260
(480) 219-6460
<http://www.c4lab.com>
Lic.#00000005LCMI00301434

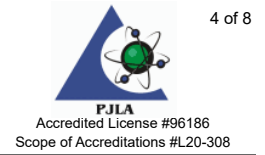
Jillian Blaney
Technical Laboratory Director

This product has been tested by C4 Laboratories LLC using valid testing methodologies and a quality system as required by Arizona state law. Results marked as 'Pass' or 'Fail' are done so in reference to R9-17: Arizona Administrative Code (A.A.C.) Title 9, Chapter 17, May 3, 2021. Values reported relate only to the product tested as received. C4 Laboratories LLC makes no claims as to the efficacy, safety or other risks associated with any detected or non-detected levels of any compounds reported herein. Contact C4 Laboratories LLC for a technical report related to this sample. This Certificate shall not be reproduced except in full, without the written approval of C4 Laboratories LLC. AZDHS certification 00000005LCMI00301434.



Certificate of Analysis

AZDHS Certification # 05LCMI00301434



Sugars

3905 Old State Highway 279
Camp Verde, AZ 86322
15302624886
Lic#: 00000111ESTX14447382

Sample: S211004-01

CC ID#: 2211C4L0004.4929
Lot#: N/A
Batch#: 2229226981209254
Batch Size: N/A

AMENDED

Sample Name: Sugars AZ 001

Strain Name: Sugar AZ 001 #3

Matrix: Concentrates Extracts

Sample Received: 11/02/2022

Report Created: 11/11/2022

Metals by ICPMS - Medical

Pass

Date Analyzed: 11/04/2022 Analyst Initials: IAM

Analyte	LOQ	Limit	Mass	Q	Status
	ppm	ppm	ppm		
Arsenic	0.100	0.405	<LOQ		Pass
Cadmium	0.100	0.405	<LOQ		Pass
Lead	0.400	1.05	<LOQ		Pass
Mercury	0.400	1.25	<LOQ		Pass

LOQ = Limit of Quantitation; ND = Not Detected. Unless otherwise stated all quality control samples performed within specifications established by the Laboratory.

Mycotoxins by ELISA- Medical

Pass

Date Analyzed: 11/03/2022 Analyst Initials: KAM

Analyte	LOQ	Limit	Mass	Q	Status
	ppb	ppb	ppb		
Aflatoxins Total	2.00	20	<LOQ		Pass
Ochratoxin A	4.00	20	<LOQ		Pass

LOQ = Limit of Quantitation; NR = Not Reported; ND = Not Detected. Unless otherwise stated all quality control samples performed within specifications established by the Laboratory. Total Aflatoxins includes Aflatoxins B1, B2, G1, and G2.



C4 LABORATORIES

7650 E. Evans Rd, Unit A
Scottsdale, AZ 85260
(480) 219-6460
<http://www.c4lab.com>
Lic.#00000005LCMI00301434

Jillian Blaney
Technical Laboratory Director

This product has been tested by C4 Laboratories LLC using valid testing methodologies and a quality system as required by Arizona state law. Results marked as 'Pass' or 'Fail' are done so in reference to R9-17: Arizona Administrative Code (A.A.C.) Title 9, Chapter 17, May 3, 2021. Values reported relate only to the product tested as received. C4 Laboratories LLC makes no claims as to the efficacy, safety or other risks associated with any detected or non-detected levels of any compounds reported herein. Contact C4 Laboratories LLC for a technical report related to this sample. This Certificate shall not be reproduced except in full, without the written approval of C4 Laboratories LLC. AZDHS certification 00000005LCMI00301434.



Certificate of Analysis

AZDHS Certification # 05LCMI00301434



PJLA
Accredited License #96186
Scope of Accreditations #L20-308

Sugars

3905 Old State Highway 279
Camp Verde, AZ 86322
15302624886
Lic#: 00000111ESTX14447382

Sample: S211004-01

CC ID#: 2211C4L0004.4929
Lot#: N/A
Batch#: 2229226981209254
Batch Size: N/A

AMENDED

Sample Name: Sugars AZ 001

Strain Name: Sugar AZ 001 #3

Matrix: Concentrates Extracts

Sample Received: 11/02/2022

Report Created: 11/11/2022

Microbials

Pass

E. coli by 3M Petrifilm- Medical

Plate

Date Analyzed: 11/03/2022 Analyst Initials: KAM

Analyte	LOQ	Limit	Mass	Q	Status
	cfu/g	cfu/g	cfu/g		
E. coli	11	100	<LOQ		Pass

Notes: Aerobic plate counts and yeast and mold are provided for informational purposes only.
LOQ = Limit of Quantitation; TNTC = Too Numerous to Count; NR = Not Reported; NT = Not Tested;
ND = Not Detected; Unless otherwise stated all quality control samples performed within specifications established by the Laboratory. Aspergillus includes species flavus, fumigatus, niger, and terreus.
E. coli by Petrifilm, Salmonella and Aspergillus by Medicinal Genomics.

Aspergillus and Salmonella by qPCR - Medical

qPCR

Date Analyzed: 11/03/2022 Analyst Initials: KAM

Analyte	Mass	Q	Status
Salmonella spp.	Not Detected		Pass
Aspergillus	Not Detected		Pass

Notes: Aerobic plate counts and yeast and mold are provided for informational purposes only.
LOQ = Limit of Quantitation; TNTC = Too Numerous to Count; NR = Not Reported; NT = Not Tested;
ND = Not Detected; Unless otherwise stated all quality control samples performed within specifications established by the Laboratory. Aspergillus includes species flavus, fumigatus, niger, and terreus.
E. coli by Petrifilm, Salmonella and Aspergillus by Medicinal Genomics.



C4 LABORATORIES

7650 E. Evans Rd, Unit A
Scottsdale, AZ 85260
(480) 219-6460
<http://www.c4lab.com>
Lic.#00000005LCMI00301434

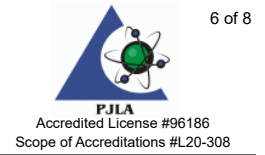
Jillian Blaney
Technical Laboratory Director

This product has been tested by C4 Laboratories LLC using valid testing methodologies and a quality system as required by Arizona state law. Results marked as 'Pass' or 'Fail' are done so in reference to R9-17: Arizona Administrative Code (A.A.C.) Title 9, Chapter 17, May 3, 2021. Values reported relate only to the product tested as received. C4 Laboratories LLC makes no claims as to the efficacy, safety or other risks associated with any detected or non-detected levels of any compounds reported herein. Contact C4 Laboratories LLC for a technical report related to this sample. This Certificate shall not be reproduced except in full, without the written approval of C4 Laboratories LLC. AZDHS certification 00000005LCMI00301434.



Certificate of Analysis

AZDHS Certification # 05LCMI00301434



Sugars

3905 Old State Highway 279
Camp Verde, AZ 86322
15302624886
Lic#: 00000111ESTX14447382

Sample: S211004-01

CC ID#: 2211C4L0004.4929
Lot#: N/A
Batch#: 2229226981209254
Batch Size: N/A

AMENDED

Sample Name: Sugars AZ 001

Sample Received: 11/02/2022

Strain Name: Sugar AZ 001 #3

Report Created: 11/11/2022

Matrix: Concentrates Extracts

Residual Solvents by Headspace GCMS - Medical

Pass

Date Analyzed: 11/03/2022 Analyst Initials: SML

Analyte	LOQ	Limit	Units	Q	Status	Analyte	LOQ	Limit	Units	Q	Status
	ppm	ppm	ppm				ppm	ppm	ppm		
Acetone	116	1000	<LOQ		Pass	2,3-Dimethylbutane	37.2		<LOQ		
Acetonitrile	46.5	410	<LOQ	L1	Pass	2-Propanol (IPA)	581	5000	<LOQ		Pass
Benzene	0.651	2	<LOQ		Pass	Isopropyl acetate	581	5000	<LOQ		Pass
Butanes	581	5000	<LOQ		Pass	Methanol	349	3000	<LOQ	L1, M1	Pass
n-Butane	581		<LOQ			Pentanes	581	5000	<LOQ		Pass
iso-Butane	581		<LOQ			n-Pentane	581		<LOQ		
Chloroform	14.0	60	<LOQ		Pass	iso-pentane	581		<LOQ		
Dichloromethane	69.8	600	<LOQ		Pass	neo-Pentane	581		<LOQ		
Ethanol	581	5000	<LOQ		Pass	Propane	581	5000	<LOQ		Pass
Ethyl acetate	581	5000	<LOQ		Pass	Toluene	107	890	<LOQ		Pass
Diethyl Ether	581	5000	<LOQ		Pass	Xylenes	256	2170	<LOQ		Pass
n-Heptane	581	5000	<LOQ		Pass	m/p-Xylene	512		<LOQ		
Hexanes	37.2	290	<LOQ		Pass	o-Xylene	256		<LOQ		
n-Hexane	37.2		<LOQ			Ethyl benzene	256		<LOQ		
2-Methylpentane	37.2		<LOQ								
3-Methylpentane	37.2		<LOQ								
2,2-Dimethylbutane	37.2		<LOQ								

LOQ = Limit of Quantitation; ND = Not Detected;
Unless otherwise stated all quality control samples performed
within specifications established by the Laboratory.
Solvents method: GC/MS



C4 LABORATORIES

7650 E. Evans Rd, Unit A
Scottsdale, AZ 85260
(480) 219-6460
<http://www.c4lab.com>
Lic.# 00000005LCMI00301434

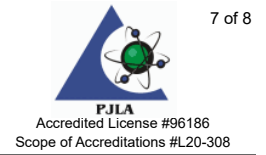
Jillian Blaney
Technical Laboratory Director

This product has been tested by C4 Laboratories LLC using valid testing methodologies and a quality system as required by Arizona state law. Results marked as 'Pass' or 'Fail' are done so in reference to R9-17: Arizona Administrative Code (A.A.C.) Title 9, Chapter 17, May 3, 2021. Values reported relate only to the product tested as received. C4 Laboratories LLC makes no claims as to the efficacy, safety or other risks associated with any detected or non-detected levels of any compounds reported herein. Contact C4 Laboratories LLC for a technical report related to this sample. This Certificate shall not be reproduced except in full, without the written approval of C4 Laboratories LLC. AZDHS certification 00000005LCMI00301434.



Certificate of Analysis

AZDHS Certification # 05LCMI00301434



Sugars
 3905 Old State Highway 279
 Camp Verde, AZ 86322
 15302624886
 Lic#: 00000111ESTX14447382

Sample: S211004-01
 CC ID#: 2211C4L0004.4929
 Lot#: N/A
 Batch#: 2229226981209254
 Batch Size: N/A

AMENDED

Sample Name: Sugars AZ 001
Strain Name: Sugar AZ 001 #3
Matrix: Concentrates Extracts

Sample Received: 11/02/2022
 Report Created: 11/11/2022

Notes and Definitions

Item	Definition
I1	Interference. Relative intensity of a characteristic ion in the sample analyte exceeded 30% of the relative intensity in the reference spectrum.
L1	The percent recovery of the LCS was above the control limit for the test but analyte was not detected above the Action Limit in Table 3.1.
M1	Matrix Spike recovery was higher than control limit but recovery of the LCS was within control limits.
M2	Matrix Spike recovery was lower than control limit but recovery of the LCS was within control limits.
V1	CCV recovery exceeded control limits but the sample analyte concentration was below maximum allowable concentrations in table 3.1
ND	Analyte NOT DETECTED at or above the reporting limit.
RPD	Relative Percent Difference
%REC	Percent Recovery
Source	Sample that was matrix spiked or duplicated.



C4 LABORATORIES

7650 E. Evans Rd, Unit A
 Scottsdale, AZ 85260
 (480) 219-6460
<http://www.c4lab.com>
 Lic.#00000005LCMI00301434

Jillian Blaney
 Technical Laboratory Director

This product has been tested by C4 Laboratories LLC using valid testing methodologies and a quality system as required by Arizona state law. Results marked as 'Pass' or 'Fail' are done so in reference to R9-17: Arizona Administrative Code (A.A.C.) Title 9, Chapter 17, May 3, 2021. Values reported relate only to the product tested as received. C4 Laboratories LLC makes no claims as to the efficacy, safety or other risks associated with any detected or non-detected levels of any compounds reported herein. Contact C4 Laboratories LLC for a technical report related to this sample. This Certificate shall not be reproduced except in full, without the written approval of C4 Laboratories LLC. AZDHS certification 00000005LCMI00301434.



11/11/2022

To Whom It May Concern:

This letter is to inform that Jon Payne amended the following order #S211004-01 (CC ID: 2211C4L0004.4929) to add a batch number.

Per AZDHS, if any kind of sample information is altered after the report is issued, then the only way a new report could be valid and defensible would be for the new report to have information of what was changed, date of change, who changed and why. This can be in the information area of the COA.

Below is Jons's official statement received:

Dakota,

I apologize I forgot to add the biotrack batch ID to the COA if you could add it please

batch # 2229226981209254

sample S211004-01

Company name is Sugars

Thank you very much

Order # S211004

Thank you,

Ryan Treacy

Founder and CEO

C4 Laboratories