

Final Product Information:	
<i>Product Form</i>	Essentials
<i>Strain</i>	Pineapple Express
<i>Batch Number</i>	CAZ2518L-PEX-B
<i>Type of Extraction</i>	Butane
<i>Date of Manufacture</i>	12/18/2025
Distribution Chain:	
<i>Final Product Manufactured By</i>	Natural Herbal Remedies (00000058ESFA63267513)
<i>Packaged By</i>	Pinal County Wellness Center (00000020DCGM00200033)
<i>Distributed By</i>	Natural Herbal Remedies (00000058ESFA63267513)
<b>Arizona Dept. of Health Services Warning</b>	Using marijuana during pregnancy could cause birth defects or other health issues to your unborn child

Intended Point of Sale Locations	
Marijuana Establishment Name	Marijuana Establishment License Number
<i>AGI Management LLC</i>	<a href="#"><u>00000142ESIL74759395</u></a>
<i>All Greens Inc.</i>	<a href="#"><u>00000033ESLY55591549</u></a>
<i>Arizona Cannabis Society INC.</i>	<a href="#"><u>00000042ESJB38310180</u></a>
<i>Arizona Golden Leaf Wellness, LLC</i>	<a href="#"><u>00000067ESBS89254298</u></a>
<i>RJK Ventures, Inc.</i>	<a href="#"><u>00000035ESBO39198288</u></a>
<i>Arizona Organix</i>	<a href="#"><u>00000095ESIP13817359</u></a>
<i>AZ Flower Power LLC</i>	<a href="#"><u>0000148ESTMY68096274</u></a>
<i>Jamestown Center</i>	<a href="#"><u>00000046ESTW28902560</u></a>
<i>Blue Palo Verde 1, LLC</i>	<a href="#"><u>0000150ESTPZ83854528</u></a>
<i>Copperstate Herbal Center Inc.</i>	<a href="#"><u>00000127ESET80222360</u></a>
<i>Salubrious Wellness Clinic Inc</i>	<a href="#"><u>00000071ESFP14031510</u></a>
<i>Sonoran Flower LLC</i>	<a href="#"><u>00000140ESDP54259308</u></a>
<i>Health Center Navajo, Inc</i>	<a href="#"><u>00000091ESHS96689917</u></a>
<i>Life Changers Investments LLC</i>	<a href="#"><u>0000156ESTDP70697204</u></a>
<i>All Rebel Rockers Inc</i>	<a href="#"><u>00000131ESYX97720376</u></a>
<i>ZonaCare</i>	<a href="#"><u>00000024ESUV84524312</u></a>
<i>Devine Desert Healing Inc</i>	<a href="#"><u>00000026ESRZ88769978</u></a>
<i>Healing Healthcare 3 Inc</i>	<a href="#"><u>00000020ESEN67630727</u></a>
<i>Natural Herbal Remedies LLC</i>	<a href="#"><u>00000058ESFA63267513</u></a>
<i>Absolute Health Care Inc</i>	<a href="#"><u>00000027ESMP88938972</u></a>
<i>PP Wellness Center</i>	<a href="#"><u>00000050ESTO08528992</u></a>
<i>Catalina Hills Botnical Care</i>	<a href="#"><u>00000020ESEN67630727</u></a>
<i>Phytotherapeutics OF Tuscon</i>	<a href="#"><u>00000049ESUK39624376</u></a>
<i>Pinal County Wellness Center</i>	<a href="#"><u>00000059ESZW76539792</u></a>
<i>Natural Remedy Patient Center</i>	<a href="#"><u>00000125ESMC92036121</u></a>
<i>Arizona Natures Wellness</i>	<a href="#"><u>00000030ESDG72791381</u></a>
<i>AZCL1</i>	<a href="#"><u>00000054ESDU93884651</u></a>
<i>K Group Partners</i>	<a href="#"><u>00000029ESAA16670843</u></a>
<i>The Kind Relief</i>	<a href="#"><u>00000053ESYR15319850</u></a>
<i>Whoa QC Inc</i>	<a href="#"><u>00000069ESPV40435704</u></a>
<i>Curious Cultivators I LLC</i>	<a href="#"><u>0000155ESTWD37312465</u></a>
<i>46 Wellness LLC</i>	<a href="#"><u>00000128ESJI00619914</u></a>
<i>Desert Boyz</i>	<a href="#"><u>0000153ESTXW47689762</u></a>
<i>Medmar Tanque Verde LLC</i>	<a href="#"><u>00000039ESEZ33667642</u></a>
<i>Forever 46 LLC</i>	<a href="#"><u>00000126ESDQ50929013</u></a>
<i>Globe Farmacy INC</i>	<a href="#"><u>00000108ESND56774062</u></a>
<i>Earth's Healing Inc</i>	<a href="#"><u>00000112ESWR37460976</u></a>
<i>Apache County Dispensary</i>	<a href="#"><u>00000133ESGJ79432018</u></a>
<i>FWA Inc</i>	<a href="#"><u>00000062ESGQ60020478</u></a>
<i>The Giving Tree Wellness Center Of Mesa Inc</i>	<a href="#"><u>00000008ESJT20615662</u></a>
<i>The Giving Tree Wellness Center Of North Phoenix Inc.</i>	<a href="#"><u>00000023ESLL63816994</u></a>
<i>Greenmed, Inc</i>	<a href="#"><u>00000113ESLZ23317951</u></a>
<i>Desertview Wellness &amp; Healing Solutions, LLC</i>	<a href="#"><u>00000077ESTT45790153</u></a>
<i>The Healing Center Farmacy LLC</i>	<a href="#"><u>00000074ESMJ87013698</u></a>
<i>Grunge Free LLC</i>	<a href="#"><u>0000160ESTDY36165846</u></a>
<i>The Green Halo LLC</i>	<a href="#"><u>00000120ESGW29293058</u></a>
<i>Broken Arrow Herbal Center Inc</i>	<a href="#"><u>00000102ESWC76772229</u></a>

<i>CJK Inc</i>	<a href="#">00000106ESEU57773093</a>
<i>Ad, LLC</i>	<a href="#">00000006ESWX56565424</a>
<i>Svaccha, LLC</i>	<a href="#">00000011ESVC04035599</a>
<i>High Desert Healing LLC</i>	<a href="#">00000014ESNA15249640</a>
<i>Nature Med Inc</i>	<a href="#">00000056ESPE92908314</a>
<i>High Desert Healing LLC</i>	<a href="#">00000007ESWD35270682</a>
<i>Sherri Dunn, LLC</i>	<a href="#">00000055ESFL28376770</a>
<i>Sweet 5, LLC</i>	<a href="#">00000013ESHH20255089</a>
<i>Kwerles Inc</i>	<a href="#">00000005ESIN89499585</a>
<i>Byers Dispensary</i>	<a href="#">00000003ESPF54627423</a>
<i>Svaccha, LLC</i>	<a href="#">00000009ESJA48286920</a>
<i>Patient Care Center 301, Inc.</i>	<a href="#">00000004ESAN63639048</a>
<i>Purplemed INC</i>	<a href="#">00000130ESFL12611544</a>
<i>Green Desert Patient Center of Peoria</i>	<a href="#">00000082ESUB29429633</a>
<i>Abaca Ponderosa LLC</i>	<a href="#">00000116ESSM79524188</a>
<i>The Healing Center Wellness Center LLC</i>	<a href="#">00000115ESJB22990289</a>
<i>H4L Ponderosa LLC</i>	<a href="#">00000118ESDH66162163</a>
<i>Soothing Ponderosa LLC</i>	<a href="#">00000117ESPN93487198</a>
<i>Organica Patient Group Inc</i>	<a href="#">00000065ESNW69665422</a>
<i>Herbal Wellness Center Inc</i>	<a href="#">00000032ESPT83532730</a>
<i>High Mountain Health, LLC</i>	<a href="#">00000087ESWR93327597</a>
<i>Dreem Green INC</i>	<a href="#">00000078ESQG10647381</a>
<i>Mohave Cannabis Club 1, LLC</i>	<a href="#">00000098ESAA47054477</a>
<i>Mohave Cannabis Club 4, LLC</i>	<a href="#">00000107ESVJ79465811</a>
<i>Legacy &amp; Co., INC</i>	<a href="#">00000079ESTS64678211</a>
<i>MCCSE240, LLC</i>	<a href="#">0000169ESTMB88870542</a>
<i>Lawerence Health Services LLC</i>	<a href="#">00000136ESTJ56415147</a>
<i>MCCSE214. LLC</i>	<a href="#">0000164ESTEB22806734</a>
<i>Desert Medical Campus INC</i>	<a href="#">00000038ESPN59181329</a>
<i>Legacy &amp; Co., INC</i>	<a href="#">00000079ESTS64678211</a>
<i>Mohave Cannabis Club 3, LLC</i>	<a href="#">00000122ESRN95872973</a>
<i>Gila Dreams X, LLC</i>	<a href="#">00000137ESPF58509627</a>
<i>Mohave Cannabis Club 2, LLC</i>	<a href="#">00000119ESKK32735375</a>
<i>Piper's Shop LLC</i>	<a href="#">00000138ESOA91816349</a>
<i>Yuma County Dispensary LLC</i>	<a href="#">00000145ESNP12373673</a>
<i>Kind Meds Inc</i>	<a href="#">00000088ESUZ76069650</a>
<i>MK Associates LLC</i>	<a href="#">00000143ESKB17654619</a>
<i>Green Goddess Products, Inc</i>	<a href="#">00000061ESIG65334270</a>
<i>MCCSE82, LLC</i>	<a href="#">0000165ESTJX05511145</a>
<i>MCD-SE Venture 25, LLC</i>	<a href="#">0000167ESTML86118201</a>
<i>MCD-SE Venture 26, LLC</i>	<a href="#">0000162ESTOS80671885</a>
<i>EBA Holdings Inc.</i>	<a href="#">00000068ESZM96727661</a>
<i>Verde Dispensary INC</i>	<a href="#">00000063ESQI60809124</a>
<i>Green Hills Patient Center Inc</i>	<a href="#">00000103ESEK38100955</a>
<i>Sixth Street Enterprises Inc</i>	<a href="#">00000090ESFB63917979</a>
<i>Arizona Natural Pain Solutions I</i>	<a href="#">00000096ESWI60030184</a>
<i>Sixth Street Enterprises Inc</i>	<a href="#">00000092ESKW00353670</a>
<i>Cannabis Research Group Inc</i>	<a href="#">00000104ESDH57805022</a>
<i>Nature's Wonder Inc</i>	<a href="#">00000075ESJK64208740</a>
<i>Dynamic Trio Holdings LLC</i>	<a href="#">0000146ESTKT01674214</a>

<i>Non Profit Patient Center Inc</i>	<a href="#">00000037ESIX56363099</a>
<i>The Desert Valley Pharmacy Inc</i>	<a href="#">00000089ESLW87335751</a>
<i>SSW Ventures, LLC</i>	<a href="#">00000111ESTX14447382</a>
<i>Ocotillo Vista, Inc</i>	<a href="#">00000051ESYP04501588</a>
<i>Arizona Tree Equity 2</i>	<a href="#">0000170ESTVQ68678199</a>
<i>Nirvana Enterprises AZ, LLC</i>	<a href="#">00000121ESBM38825533</a>
<i>Nirvana Enterprises AZ, LLC</i>	<a href="#">00000015DCGC00626237</a>
<i>Total Accountability Systems I Inc</i>	<a href="#">00000110ESBL46708127</a>
<i>RCH Wellness Center</i>	<a href="#">00000080ESNP00364439</a>
<i>Arizona Wellness Collective 3, Inc</i>	<a href="#">00000044ESZW01555573</a>
<i>Total Health &amp; Wellness Inc</i>	<a href="#">00000060ESTV86857950</a>
<i>Total Health &amp; Wellness Inc</i>	<a href="#">00000021ESQX24132908</a>
<i>Higher than High I LLC</i>	<a href="#">0000151ESTVN87881223</a>
<i>Phoenix Relief Center Inc</i>	<a href="#">00000047ESRJ75098505</a>
<i>480 License Holdings</i>	<a href="#">0000154ESTQI31348041</a>
<i>Ponderosa Botanical Care Inc</i>	<a href="#">00000109ESVM44878444</a>
<i>MMJ Apothecary</i>	<a href="#">00000100ESEC12878172</a>
<i>Total Accountability Patient Care</i>	<a href="#">00000114ESQS66067289</a>
<i>Rainbow Collective Inc.</i>	<a href="#">00000124ESOS02903622</a>
<i>Cactus Bloom Facilities Management LLC</i>	<a href="#">00000144ESQK21738687</a>
<i>Green Medicine</i>	<a href="#">00000094ESMX02282810</a>
<i>holistic Patient Wellness Group</i>	<a href="#">00000015ESEM68131310</a>
<i>S Flower N Phoenix, Inc</i>	<a href="#">00000093ESRF39774783</a>
<i>CSI Solutions, Inc</i>	<a href="#">00000012ESIS11195422</a>
<i>East Valley Patient Wellness Group Inc</i>	<a href="#">00000019ESXY11403163</a>
<i>Kannaboost Technology Inc</i>	<a href="#">00000048ESNO41782628</a>
<i>S Flower SE 4, Inc.</i>	<a href="#">0000152ESTNJ52349435</a>
<i>Sol Flower SE 3</i>	<a href="#">0000171ESTSC03605413</a>
<i>Sol Flower SE 1</i>	<a href="#">0000166ESTNU15027116</a>
<i>S Flower SE 2, Inc.</i>	<a href="#">0000163ESTSO81819209</a>
<i>Serenity Smoke, LLC</i>	<a href="#">00000134ESWD58732580</a>
<i>Border Health, Inc</i>	<a href="#">00000022ESMC44584355</a>
<i>Pleasant Plants I LLC</i>	<a href="#">0000159ESTFT57497963</a>
<i>Juicy Joint I LLC</i>	<a href="#">0000147ESTXX54706468</a>
<i>Joint Junkies I LLC</i>	<a href="#">0000158ESTLH17620655</a>
<i>MCCSE29, LLC</i>	<a href="#">0000149ESTUL49249395</a>
<i>The Health Center Of Cochise Inc</i>	<a href="#">00000099ESVM28064808</a>
<i>Green Lightning, LLC</i>	<a href="#">0000157ESTHZ07905975</a>
<i>Superior Organics</i>	<a href="#">00000123ESYS35386603</a>
<i>203 Organix, LLC</i>	<a href="#">00000070ESCO78837103</a>
<i>Nature's Healing Center Inc</i>	<a href="#">00000031ESCS44452076</a>
<i>Buds &amp; Roses, Inc</i>	<a href="#">00000028ESVU53788832</a>
<i>Nature's Healing Center Inc</i>	<a href="#">00000041ESLU31226658</a>
<i>Valley Healing Group Inc</i>	<a href="#">00000072ESRF58078256</a>
<i>Cardinal Square, Inc</i>	<a href="#">00000132ESFR75101840</a>
<i>Uncle Harry Inc</i>	<a href="#">0000129ESRG43839179</a>
<i>M&amp;T Retail Facility 1, LLC</i>	<a href="#">00000101ESZO30906924</a>
<i>4245 Investments LLC</i>	<a href="#">00000036ESXU42814428</a>
<i>G.T.L. LLC</i>	<a href="#">00000034ESEZ92106085</a>
<i>Swallowtail 3, LLC</i>	<a href="#">0000161ESTOJ23023764</a>

<i>Sea Of Green LLC</i>	<a href="#"><u>00000057ESJG92466754</u></a>
<i>Medical Pain Relief Inc</i>	<a href="#"><u>00000010ESIR42914838</u></a>
<i>Pahana, Inc</i>	<a href="#"><u>00000018ESKD27426528</u></a>
<i>Mohave Valley Consulting, LLC</i>	<a href="#"><u>00000017ESMI32133238</u></a>
<i>Green Sky Patient Center of Scottsdale North Inc</i>	<a href="#"><u>00000081ESLT56066782</u></a>
<i>Cochise County Wellness, LLC</i>	<a href="#"><u>00000135ESGE19332725</u></a>
<i>Abedon Saiz LLC</i>	<a href="#"><u>00000052ESLX15969554</u></a>
<i>Fort Mountain Consulting, LLC</i>	<a href="#"><u>00000016ESBY46918805</u></a>
<i>Az Compassionate Care Inc</i>	<a href="#"><u>00000076ESON21559195</u></a>
<i>Valley Of The Sun Dispensary, Inc</i>	<a href="#"><u>00000085ESVF25061802</u></a>
<i>White Mountain Health Center Inc</i>	<a href="#"><u>00000083ESGB09219996</u></a>
<i>Wickenburg Alternative Medicine LLC</i>	<a href="#"><u>00000097ESKC38985532</u></a>
<i>Woodstock 1</i>	<a href="#"><u>0000168ESTBM41952754</u></a>
<i>Natural Relief Clinic Inc</i>	<a href="#"><u>00000066ESUJ44186931</u></a>
<i>Natural Relief Clinic Inc</i>	<a href="#"><u>00000073ESED95493026</u></a>
<i>Jamestown Center</i>	<a href="#"><u>00000045ESYU34105986</u></a>
<i>FJM Group LLC</i>	<a href="#"><u>00000141ESYC13235553</u></a>
<i>Fort Consulting, LLC</i>	<a href="#"><u>00000064ESAK09838873</u></a>
<i>AZGM 3, LLC</i>	<a href="#"><u>00000040ESDX57445071</u></a>
<i>Perpetual Healthcare, LLC</i>	<a href="#"><u>00000105ESDR54985961</u></a>
<i>Vending Logistics LLC</i>	<a href="#"><u>00000043ESPE02331128</u></a>
<i>Patient Alternative Relief Center, LLC</i>	<a href="#"><u>00000086ESQZ01367420</u></a>
<i>The Medicine Room LLC</i>	<a href="#"><u>00000084ESFH12297246</u></a>
<i>Arizona Wellness Center Safford</i>	<a href="#"><u>0000142DRCLD76170272</u></a>
<i>Sherri Dunn, LLC</i>	<a href="#"><u>0000172ESTFM12469613</u></a>

## Pineapple Express Select B Distillate

Sample ID: 2512APO5698.28630

Strain: Pineapple Express

Matrix: Concentrates & Extracts

Type: Formulated Vape Oil

Source Batch #:

Collected: 12/23/2025 09:19 am

Received: 12/23/2025

Completed: 12/29/2025

Batch #: CAZ2518L-PEX-B

Harvest Date:

Client

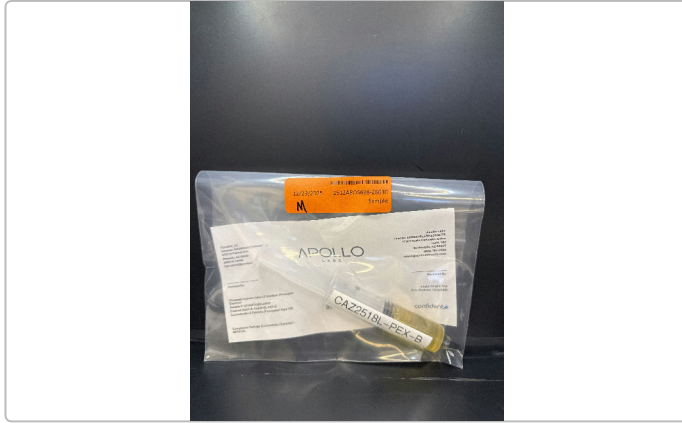
Curaleaf, AZ

Lic. # 00000040DCOV00144711

Lot #:

Production/Manufacture Date:

Production/Manufacture Method:



### Summary

Test	Date Tested	Result
Batch		Pass
Cannabinoids	12/26/2025	Complete
Residual Solvents	12/24/2025	Pass
Microbials	12/29/2025	Pass
Mycotoxins	12/24/2025	Pass
Pesticides	12/24/2025	Pass
Heavy Metals	12/24/2025	Pass

### Cannabinoids by SOP-6

Complete

81.6454 %	4.1944 %	89.8698 %	NT
Total THC	Total CBD	Total Cannabinoids <sup>(Q3)</sup>	Total Terpenes <sup>(Q3)</sup>

Analyte	LOD %	LOQ %	Result %	Result mg/g	Q
THCa		0.1000	ND	ND	
Δ9-THC		0.1000	81.6455	816.455	
Δ8-THC		0.1000	2.8622	28.622	
THCV		0.1000	0.3609	3.609	
CBDa		0.1000	ND	ND	
CBD		0.1000	4.1944	41.944	
CBDVa		0.1000	ND	ND	
CBDV		0.1000	ND	ND	
CBN		0.1000	0.5257	5.257	
CBGa		0.1000	ND	ND	
CBG		0.1000	<LOQ	<LOQ	
CBC		0.1000	0.2811	2.811	
Total THC			81.6454	816.4548	
Total CBD			4.1944	41.9440	
Total			89.8698	898.6982	

Date Tested: 12/26/2025 07:00 am



*Anthony Settanni*

Anthony Settanni  
Lab Director  
12/29/2025

Confident LIMS  
All Rights Reserved  
coa.support@confidentlims.com  
(866) 506-5866  
www.confidentlims.com



#### ARIZONA DEPARTMENT OF HEALTH SERVICES' WARNING:

Marijuana use can be addictive and can impair an individual's ability to drive a motor vehicle or operate heavy machinery. Marijuana smoke contains carcinogens and can lead to an increased risk for cancer, tachycardia, hypertension, heart attack, and lung infection. Marijuana use may affect the health of a pregnant woman and the unborn child. Using marijuana during pregnancy could cause birth defects or other health issues to your unborn child;

#### KEEP OUT OF REACH OF CHILDREN.

The product associated with the COA has been tested by Apollo Labs using validated state certified testing methodologies as required by Arizona state law. Values reported herein relate only to the specific sample of product submitted by Client for testing. Apollo Labs makes no claims as to the efficacy, safety or other risks associated with any detected or non-detected levels of any compounds reported herein. This Certificate shall not be reproduced except in full, without the written approval of Apollo Labs.

## Pineapple Express Select B Distillate

Sample ID: 2512APO5698.28630

Strain: Pineapple Express

Matrix: Concentrates & Extracts

Type: Formulated Vape Oil

Source Batch #:

Collected: 12/23/2025 09:19 am

Received: 12/23/2025

Completed: 12/29/2025

Batch #: CAZ2518L-PEX-B

Harvest Date:

Client

Curaleaf, AZ

Lic. # 00000040DCOV00144711

Lot #:

Production/Manufacture Date:

Production/Manufacture Method:

## Pesticides by SOP-22

Pass

Analyte	LOQ	Limit	Result	Q	Status	Analyte	LOQ	Limit	Result	Q	Status
	PPM	PPM	PPM				PPM	PPM	PPM		
Abamectin	0.2500	0.5000	ND		Pass	Hexythiazox	0.5000	1.0000	ND		Pass
Acephate	0.2000	0.4000	ND		Pass	Imazalil	0.1000	0.2000	ND		Pass
Acetamiprid	0.1000	0.2000	ND		Pass	Imidacloprid	0.2000	0.4000	ND		Pass
Aldicarb	0.2000	0.4000	ND		Pass	Kresoxim Methyl	0.2000	0.4000	ND		Pass
Azoxystrobin	0.1000	0.2000	ND		Pass	Malathion	0.1000	0.2000	ND		Pass
Bifenazate	0.1000	0.2000	ND		Pass	Metalaxyl	0.1000	0.2000	ND		Pass
Bifenthrin	0.1000	0.2000	ND		Pass	Methiocarb	0.1000	0.2000	ND		Pass
Boscalid	0.2000	0.4000	ND		Pass	Methomyl	0.2000	0.4000	ND		Pass
Carbaryl	0.1000	0.2000	ND		Pass	Myclobutanil	0.1000	0.2000	ND		Pass
Carbofuran	0.1000	0.2000	ND		Pass	Naled	0.2500	0.5000	ND		Pass
Chlorantraniliprole	0.1000	0.2000	ND		Pass	Oxamyl	0.5000	1.0000	ND		Pass
Chlorfenapyr	0.5000	1.0000	ND		Pass	Paclobutrazol	0.2000	0.4000	ND		Pass
Chlorpyrifos	0.1000	0.2000	ND		Pass	Permethrins	0.1000	0.2000	ND		Pass
Clofentezine	0.1000	0.2000	ND		Pass	Phosmet	0.1000	0.2000	ND		Pass
Cyfluthrin	0.5000	1.0000	ND		Pass	Piperonyl	1.0000	2.0000	ND		Pass
Cypermethrin	0.5000	1.0000	ND		Pass	Butoxide					
Daminozide	0.5000	1.0000	ND		Pass	Prallethrin	0.1000	0.2000	ND		Pass
Diazinon	0.1000	0.2000	ND		Pass	Propiconazole	0.2000	0.4000	ND		Pass
Dichlorvos	0.0500	0.1000	ND		Pass	Propoxur	0.1000	0.2000	ND		Pass
Dimethoate	0.1000	0.2000	ND		Pass	Pyrethrins	0.5000	1.0000	ND		Pass
Ethoprophos	0.1000	0.2000	ND		Pass	Pyridaben	0.1000	0.2000	ND		Pass
Etofenprox	0.2000	0.4000	ND		Pass	Spinosad	0.1000	0.2000	ND		Pass
Etoxazole	0.1000	0.2000	ND		Pass	Spiromesifen	0.1000	0.2000	ND		Pass
Fenoxycarb	0.1000	0.2000	ND		Pass	Spirotetramat	0.1000	0.2000	ND		Pass
Fenpyroximate	0.2000	0.4000	ND		Pass	Spiroxamine	0.2000	0.4000	ND		Pass
Fipronil	0.2000	0.4000	ND		Pass	Tebuconazole	0.2000	0.4000	ND		Pass
Flonicamid	0.5000	1.0000	ND		Pass	Thiacloprid	0.1000	0.2000	ND		Pass
Fludioxonil	0.2000	0.4000	ND		Pass	Thiamethoxam	0.1000	0.2000	ND		Pass
						Trifloxystrobin	0.1000	0.2000	ND		Pass

Date Tested: 12/24/2025 07:00 am



*Anthony Settanni*

Anthony Settanni  
Lab Director  
12/29/2025

Confident LIMS  
All Rights Reserved  
coa.support@confidentlims.com  
(866) 506-5866  
www.confidentlims.com



### ARIZONA DEPARTMENT OF HEALTH SERVICES' WARNING:

Marijuana use can be addictive and can impair an individual's ability to drive a motor vehicle or operate heavy machinery. Marijuana smoke contains carcinogens and can lead to an increased risk for cancer, tachycardia, hypertension, heart attack, and lung infection. Marijuana use may affect the health of a pregnant woman and the unborn child. Using marijuana during pregnancy could cause birth defects or other health issues to your unborn child.

### KEEP OUT OF REACH OF CHILDREN.

The product associated with the COA has been tested by Apollo Labs using validated state certified testing methodologies as required by Arizona state law. Values reported herein relate only to the specific sample of product submitted by Client for testing. Apollo Labs makes no claims as to the efficacy, safety or other risks associated with any detected or non-detected levels of any compounds reported herein. This Certificate shall not be reproduced except in full, without the written approval of Apollo Labs.



## Pineapple Express Select B Distillate

Sample ID: 2512APO5698.28630

Strain: Pineapple Express

Matrix: Concentrates & Extracts

Type: Formulated Vape Oil

Source Batch #:

Collected: 12/23/2025 09:19 am

Received: 12/23/2025

Completed: 12/29/2025

Batch #: CAZ2518L-PEX-B

Harvest Date:

Client

Curaleaf, AZ

Lic. # 00000040DCOV00144711

Lot #:

Production/Manufacture Date:

Production/Manufacture Method:

### Microbials

Pass

Analyte	Limit	Result	Status	Q
Salmonella SPP by QPCR: SOP-15	Detected/Not Detected in 1g	ND	Pass	
Aspergillus Flavus Aspergillus Fumigatus or Aspergillus Niger by QPCR: SOP-14	Detected/Not Detected in 1g	ND	Pass	
Aspergillus Terreus by QPCR: SOP-14	Detected/Not Detected in 1g	ND	Pass	

Analyte	LOQ	Limit	Result	Status	Q
	CFU/g	CFU/g	CFU/g		
E. Coli by traditional plating: SOP-13	10.0	100.0	< 10 CFU/g	Pass	

Date Tested: 12/29/2025 12:00 am

### Mycotoxins by SOP-22

Pass

Analyte	LOD	LOQ	Limit	Units	Status	Q
	µg/kg	µg/kg	µg/kg	µg/kg		
B1	5	10	20	ND	Pass	
B2	5	10	20	ND	Pass	
G1	5	10	20	ND	Pass	
G2	5	10	20	ND	Pass	
Total Aflatoxins	5	10	20	ND	Pass	
Ochratoxin A	5	10	20	ND	Pass	11

Date Tested: 12/24/2025 07:00 am

### Heavy Metals by SOP-21

Pass

Analyte	LOD	LOQ	Limit	Units	Status	Q
	PPM	PPM	PPM	PPM		
Arsenic	0.1000	0.1330	0.4000	ND	Pass	
Cadmium	0.1000	0.1330	0.4000	ND	Pass	
Lead	0.2500	0.3330	1.0000	ND	Pass	
Mercury	0.0500	0.0660	0.2000	ND	Pass	

Date Tested: 12/24/2025 07:00 am



*Anthony Settanni*

Anthony Settanni  
Lab Director  
12/29/2025

Confident LIMS  
All Rights Reserved  
coa.support@confidentlims.com  
(866) 506-5866  
www.confidentlims.com



#### ARIZONA DEPARTMENT OF HEALTH SERVICES' WARNING:

Marijuana use can be addictive and can impair an individual's ability to drive a motor vehicle or operate heavy machinery. Marijuana smoke contains carcinogens and can lead to an increased risk for cancer, tachycardia, hypertension, heart attack, and lung infection. Marijuana use may affect the health of a pregnant woman and the unborn child. Using marijuana during pregnancy could cause birth defects or other health issues to your unborn child.

#### KEEP OUT OF REACH OF CHILDREN.

The product associated with the COA has been tested by Apollo Labs using validated state certified testing methodologies as required by Arizona state law. Values reported herein relate only to the specific sample of product submitted by Client for testing. Apollo Labs makes no claims as to the efficacy, safety or other risks associated with any detected or non-detected levels of any compounds reported herein. This Certificate shall not be reproduced except in full, without the written approval of Apollo Labs.



## Pineapple Express Select B Distillate

Sample ID: 2512APO5698.28630

Strain: Pineapple Express

Matrix: Concentrates & Extracts

Type: Formulated Vape Oil

Source Batch #:

Collected: 12/23/2025 09:19 am

Received: 12/23/2025

Completed: 12/29/2025

Batch #: CAZ2518L-PEX-B

Harvest Date:

Client

Curaleaf, AZ

Lic. # 00000040DCOV00144711

Lot #:

Production/Manufacture Date:

Production/Manufacture Method:

### Residual Solvents by SOP-3

Analyte	LOQ	Limit	Result	Status	Q
	PPM	PPM	PPM		Pass
Acetone	381.0000	1000.0000	ND	Pass	
Acetonitrile	154.0000	410.0000	ND	Pass	
Benzene	1.0000	2.0000	ND	Pass	
Butanes	1914.0000	5000.0000	ND	Pass	
Chloroform	24.0000	60.0000	ND	Pass	
Dichloromethane	231.0000	600.0000	ND	Pass	
Ethanol	1910.0000	5000.0000	ND	Pass	
Ethyl-Acetate	1907.0000	5000.0000	ND	Pass	
Ethyl-Ether	1901.0000	5000.0000	ND	Pass	
n-Heptane	1892.0000	5000.0000	ND	Pass	
Hexanes	115.0000	290.0000	ND	Pass	
Isopropanol	1915.0000	5000.0000	ND	Pass	
Isopropyl-Acetate	1908.0000	5000.0000	ND	Pass	
Methanol	1141.0000	3000.0000	ND	Pass	
Pentane	1923.0000	5000.0000	ND	Pass	
Toluene	343.0000	890.0000	ND	Pass	
Xylenes + Ethyl Benzene	841.0000	2170.0000	ND	Pass	

Date Tested: 12/24/2025 07:00 am



*Anthony Settanni*

Anthony Settanni  
Lab Director  
12/29/2025

Confident LIMS  
All Rights Reserved  
coa.support@confidentlims.com  
(866) 506-5866  
www.confidentlims.com



**ARIZONA DEPARTMENT OF HEALTH SERVICES' WARNING:**

Marijuana use can be addictive and can impair an individual's ability to drive a motor vehicle or operate heavy machinery. Marijuana smoke contains carcinogens and can lead to an increased risk for cancer, tachycardia, hypertension, heart attack, and lung infection. Marijuana use may affect the health of a pregnant woman and the unborn child. Using marijuana during pregnancy could cause birth defects or other health issues to your unborn child;

**KEEP OUT OF REACH OF CHILDREN.**

The product associated with the COA has been tested by Apollo Labs using validated state certified testing methodologies as required by Arizona state law. Values reported herein relate only to the specific sample of product submitted by Client for testing. Apollo Labs makes no claims as to the efficacy, safety or other risks associated with any detected or non-detected levels of any compounds reported herein. This Certificate shall not be reproduced except in full, without the written approval of Apollo Labs.

## Pineapple Express Select B Distillate

Sample ID: 2512APO5698.28630

Strain: Pineapple Express

Matrix: Concentrates & Extracts

Type: Formulated Vape Oil

Source Batch #:

Collected: 12/23/2025 09:19 am

Received: 12/23/2025

Completed: 12/29/2025

Batch #: CAZ2518L-PEX-B

Harvest Date:

Client

Curaleaf, AZ

Lic. # 00000040DCOV00144711

Lot #:

Production/Manufacture Date:

Production/Manufacture Method:

## Terpenes

Analyte	LOQ	Result	Result	Q	Analyte	LOQ	Result	Result	Q
---------	-----	--------	--------	---	---------	-----	--------	--------	---



## Primary Aromas

--	--	--	--	--

Date Tested:



*Anthony Settanni*

Anthony Settanni  
Lab Director  
12/29/2025

Confident LIMS  
All Rights Reserved  
coa.support@confidentlims.com  
(866) 506-5866  
www.confidentlims.com



### ARIZONA DEPARTMENT OF HEALTH SERVICES' WARNING:

Marijuana use can be addictive and can impair an individual's ability to drive a motor vehicle or operate heavy machinery. Marijuana smoke contains carcinogens and can lead to an increased risk for cancer, tachycardia, hypertension, heart attack, and lung infection. Marijuana use may affect the health of a pregnant woman and the unborn child. Using marijuana during pregnancy could cause birth defects or other health issues to your unborn child;

### KEEP OUT OF REACH OF CHILDREN.

The product associated with the COA has been tested by Apollo Labs using validated state certified testing methodologies as required by Arizona state law. Values reported herein relate only to the specific sample of product submitted by Client for testing. Apollo Labs makes no claims as to the efficacy, safety or other risks associated with any detected or non-detected levels of any compounds reported herein. This Certificate shall not be reproduced except in full, without the written approval of Apollo Labs.

## Pineapple Express Select B Distillate

Sample ID: 2512APO5698.28630

Strain: Pineapple Express

Matrix: Concentrates & Extracts

Type: Formulated Vape Oil

Source Batch #:

Collected: 12/23/2025 09:19 am

Received: 12/23/2025

Completed: 12/29/2025

Batch #: CAZ2518L-PEX-B

Harvest Date:

Client

Curaleaf, AZ

Lic. # 00000040DCOV00144711

Lot #:

Production/Manufacture Date:

Production/Manufacture Method:

## Qualifiers Definitions

Qualifier Notation	Qualifier Description
D1	The limit of quantitation and the sample results were adjusted to reflect sample dilution
I1	The relative intensity of a characteristic ion in a sample analyte exceeded the acceptance criteria in subsection (L)(1) with respect to the reference spectra, indicating interference
L1	When testing for pesticides, fungicides, herbicides, growth regulators, heavy metals, or residual solvents, the percent recovery of a laboratory control sample is greater than the acceptance limits in subsection (K)(2)(c), but the sample's target analytes were not detected above the maximum allowable concentrations in Table 3.1 for the analytes in the sample
M1	The recovery from the matrix spike in subsection (K)(4) was: a. High, but the recovery from the laboratory control sample in subsection (K)(2) was within acceptance criteria
M2	The recovery from the matrix spike in subsection (K)(4) was: b. Low, but the recovery from the laboratory control sample in subsection (K)(2) was within acceptance criteria
M3	The recovery from the matrix spike in subsection (K)(4) was: c. Unusable because the analyte concentration was disproportionate to the spike level, but the recovery from the laboratory control sample in subsection (K)(2) was within acceptance criteria
R1	The relative percent difference for the laboratory control sample and duplicate exceeded the limit in subsection (K)(3), but the recovery in subsection (K)(2) was within acceptance criteria
V1	The recovery from continuing calibration verification standards exceeded the acceptance limits in subsection (J)(1)(b), but the sample's target analytes were not detected above the maximum allowable concentrations in Table 3.1 for the analytes in the sample
Q1	Sample integrity was not maintained - Q1
Q2	The sample is heterogeneous, and sample homogeneity could not be readily achieved using routine laboratory practices - Used to denote that the sample as-received could not be fully pre-homogenized in packaging prior to microbiology analysis
Q3	Testing result is for informational purposes only and cannot be used to satisfy dispensary testing requirements in R9-17-317.01(A) or labeling requirements in R9-17-317

## Notes and Addenda:



*[Signature]*

Bryant Kearl  
Chief Scientific Officer  
12/29/2025

Confident LIMS  
All Rights Reserved  
coa.support@confidentlims.com  
(866) 506-5866  
www.confidentlims.com



### ARIZONA DEPARTMENT OF HEALTH SERVICES' WARNING:

Marijuana use can be addictive and can impair an individual's ability to drive a motor vehicle or operate heavy machinery. Marijuana smoke contains carcinogens and can lead to an increased risk for cancer, tachycardia, hypertension, heart attack, and lung infection. Marijuana use may affect the health of a pregnant woman and the unborn child. Using marijuana during pregnancy could cause birth defects or other health issues to your unborn child.

### KEEP OUT OF REACH OF CHILDREN.

The product associated with the COA has been tested by Apollo Labs using validated state certified testing methodologies as required by Arizona state law. Values reported herein relate only to the specific sample of product submitted by Client for testing. Apollo Labs makes no claims as to the efficacy, safety or other risks associated with any detected or non-detected levels of any compounds reported herein. This Certificate shall not be reproduced except in full, without the written approval of Apollo Labs.

## Pineapple Express Select B Distillate

Sample ID: 2512APO5698.28630

Strain: Pineapple Express

Matrix: Concentrates & Extracts

Type: Formulated Vape Oil

Source Batch #:

Collected: 12/23/2025 09:19 am

Received: 12/23/2025

Completed: 12/29/2025

Batch #: CAZ2518L-PEX-B

Harvest Date:

Client

**Curaleaf, AZ**

Lic. # 00000040DCOV00144711

Lot #:

Production/Manufacture Date:

Production/Manufacture Method:

## Customer Supplied Information:



Bryant Kearl  
Chief Scientific Officer  
12/29/2025

Confident LIMS  
All Rights Reserved  
[coa.support@confidentlims.com](mailto:coa.support@confidentlims.com)  
(866) 506-5866  
[www.confidentlims.com](http://www.confidentlims.com)



**ARIZONA DEPARTMENT OF HEALTH SERVICES' WARNING:**

Marijuana use can be addictive and can impair an individual's ability to drive a motor vehicle or operate heavy machinery. Marijuana smoke contains carcinogens and can lead to an increased risk for cancer, tachycardia, hypertension, heart attack, and lung infection. Marijuana use may affect the health of a pregnant woman and the unborn child. Using marijuana during pregnancy could cause birth defects or other health issues to your unborn child;

**KEEP OUT OF REACH OF CHILDREN.**

The product associated with the COA has been tested by Apollo Labs using validated state certified testing methodologies as required by Arizona state law. Values reported herein relate only to the specific sample of product submitted by Client for testing. Apollo Labs makes no claims as to the efficacy, safety or other risks associated with any detected or non-detected levels of any compounds reported herein. This Certificate shall not be reproduced except in full, without the written approval of Apollo Labs.

[illegible]

[illegible]

[illegible]



[illegible]

[illegible]

[illegible]

[illegible]